

Dia 42mm Length 60mm BLDC motor

J42BL60

Weight: 290g (approx.)



Typical Application

Home Application: White Goods, Small Appliance, Fanner, Coffee Machine, Meat Grinder 家用电器：白色家电，小家电，无风叶电风扇，有风叶风扇，咖啡机，绞肉机

Medical Apparatus: Medical Pump, Surgery Tools, Medical Stirrer, centrifugal Machine 医疗器械：医疗泵，手术器械，搅拌机，离心机

Power Tools: Screwdriver, Drill, Air Compressor 电动工具：电动螺丝批，电钻，气体压缩机

Business Equipment: Printer, Copier, Projector, ATM, Vending Machine 商业设备：打印机，复印机，投影机，ATM机，售货机

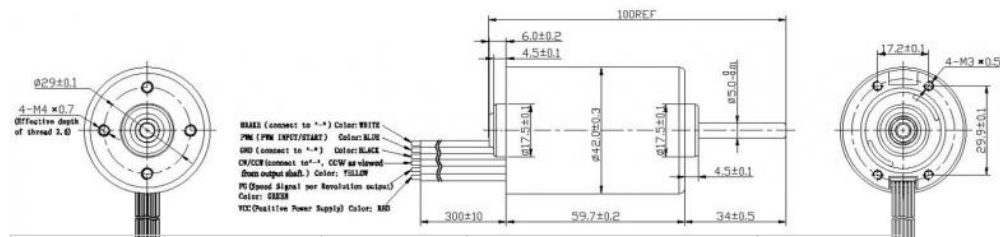
Personal Care: Hair Dryer, Massager, Vibrator 个人护理：风筒，按摩器，震动器

Key Features

Characteristic: CW & CCW, Signal function available, Locked rotor protection, Stepless speed regulation, Low noise, Low EMI, Long life 10000-50000hrs

特征：双转向，信号功能，锁定保护，无级调速，低噪音，低电磁干扰，超长寿命10000-50000小时

Tags: BLDC motor



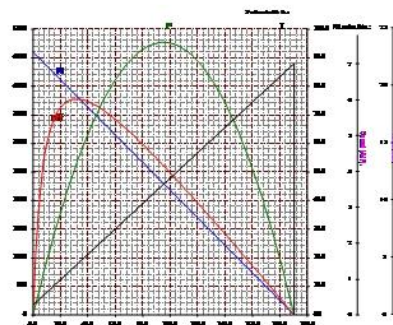
Model 型号	电压 Voltage(V)		No Load 空载		Rated Load 额定负载				Stall 堵转	
	Operating Range	Rated	Speed (rpm)	Current (A)	Torque (mNm)	Speed (rpm)	Current (A)	Output P. (W)	Torque (mNm)	Current (A)
J42BL60M-S01	8-26	12	4590	0.28	45.00	3500	1.88	16.54	190.2	3.0
J42BL60M-S02	8-26	24	4260	0.26	95.06	3270	1.85	32.58	409.2	3.0
J42BL60M-S03	8-26	24	4046	0.24	60.04	3342	1.21	21.01	344.6	2.5
J42BL60M-S04	85-265 ac	120 ac	9700	0.19	19.816	7930	0.368	16.45	96.5	1.0
J42BL60M-S05	85-265 ac	220 ac	10760	0.12	24.525	8500	0.247	21.85	116.8	1.0

Customization

Notice: Data in this typical specification sheet are for other certain customer. Voltage, rated torque, speed, current, power and shaft extension feature & dimension can be changed to meet customer specific requirement.

注意：上述规格仅针对特定客户，电压、扭矩、转速、电流、功率、输出轴的特征和尺寸等都可以按照客户的特殊要求进行调整。

Curve



Remarks

The same size with brushed motor JRS-755.

Dia 42mm Length 35mm BLDC motor

J42BL35

Weight: 160g (approx.)



Typical Application

Home Application: White Goods, Small Appliance, Fanner, Coffee Machine, Milk Tea Machine
 家用电器：白色家电，小家电，无风叶电风扇，有风叶风扇，咖啡机，奶茶机

Medical Apparatus: Medical Pump, Surgery Tools, Medical Stirrer, centrifugal Machine
 医疗器械：医疗泵，手术器械，搅拌器，离心机

Power Tools: Screwdriver, Drill, Air Compressor
 电动工具：电动螺丝批，电钻，气体压缩机

Industry Equipment: Electric Valve, Actuator
 工业设备：电动阀门，致动器

Business Equipment: Printer, Copier, Projector, ATM, Vending Machine
 商业设备：打印机，复印机，投影机，ATM机，售卖机

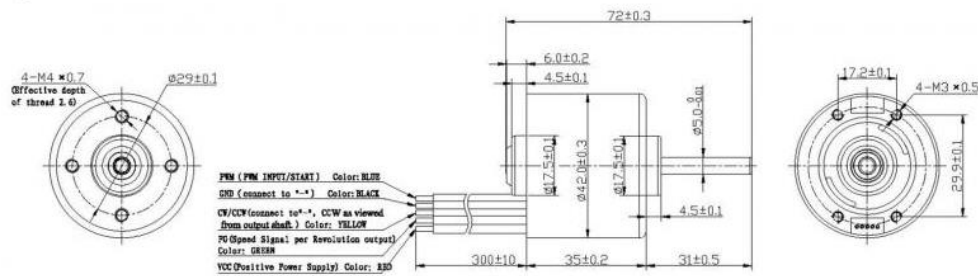
Personal Care: Hair Dryer, Massager, Vibrator
 个人护理：风筒，按摩器，震动器

Key Features

Characteristic: CW & CCW, Signal function available, Locked rotor protection, Stepless speed regulation, Low noise, Low EMI, Long life 10000-50000hrs

特征：双转向，信号功能，无级调速，低噪音，低电磁干扰，超长寿命10000-50000小时

Tags: BLDC motor



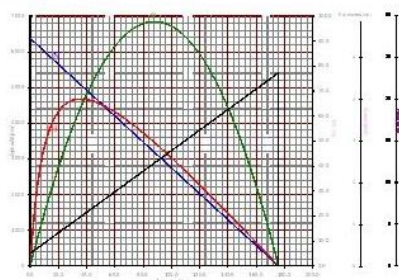
Model 型号	电压 Voltage(V)		No Load 空载		Rated Load 额定负载				Stall 堵转	
	Operating Range	Rated	Speed (rpm)	Current (A)	Torque (mNm)	Speed (rpm)	Current (A)	Output P. (W)	Torque (mNm)	Current (A)
J42BL35M-S01	8-26	12	2860	0.21	40.2	2050	1.16	8.62	141.0	2.5
J42BL35M-S02	8-26	24	6370	0.30	35.0	5100	1.17	18.72	175.8	2.5
J42BL35M-S03	8-26	24	9400	0.53	18.05	8530	1.16	16.12	194.9	2.5
J42BL35M-S04	8-26	24	5539	0.25	55.03	4393	1.41	25.31	264.3	2.5
J42BL35M-S05	8-26	24	8455	0.33	40.0	7580	1.64	31.75	386.8	2.5

Customization

Notice: Data in this typical specification sheet are for other certain customer. Voltage, rated torque, speed, current, power and shaft extension feature & dimension can be changed to meet customer specific requirement.

注意：上述规格仅针对特定客户，电压、扭矩、转速、电流、功率、输出轴的特征和尺寸等都可以按照客户的特殊要求进行调整。

Curve



Remarks

The diameter is the same with 7 series brushed dc motor.

Dia 36mm Length 50mm BLDC motor

J36BL50

Weight: N/A (approx.)



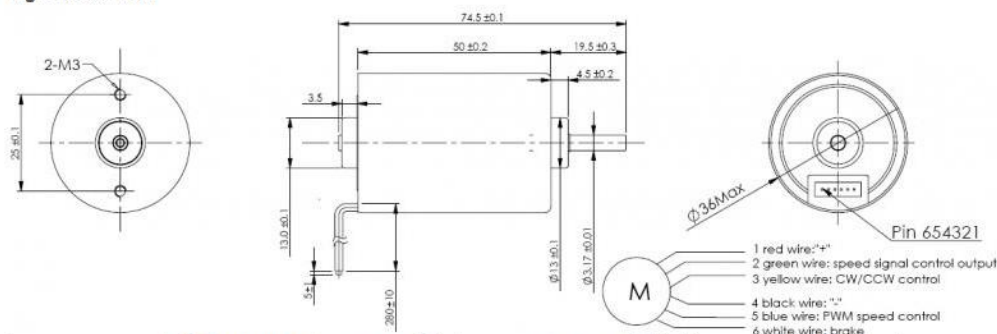
Typical Application

Home Application: White Goods, Small Appliance, Fanner, Coffee Machine, Milk Tea Machine 家用电器：白色家电，小家电，风扇，咖啡机，奶茶机
 Medical Apparatus: Medical Pump, Surgery Tools, Medical Stirrer, centrifugal Machine 医疗器械：医疗泵，手术器械，搅拌机，离心机
 Industry Equipment: Pump, Portable Screwdriver, Small Compressor 工业设备：泵，手持电批，小型压缩机
 Business Equipment: Printer, Copier, Projector, ATM, Vending Machine 商业设备：打印机，复印机，投影机，ATM机，售卖机
 Personal Care: Hair Dryer, Electric Shaver, Massager 个人护理：风筒，电动须刨，按摩器

Key Features

Characteristic: CW & CCW, Signal function available, Locked rotor protection, Stepless speed regulation, Low noise, Low EMI, Long life 10000-50000hrs 特征：双转向，信号功能，锁定保护，无级调速，低噪音，低电磁干扰，超长寿命10000-50000小时

Tags: BLDC motor



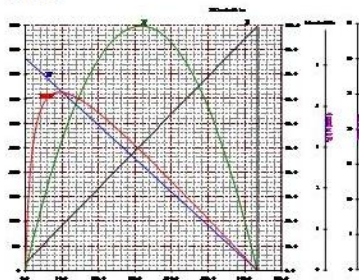
Model 型号	电压 Voltage(V)		No Load 空载		Rated Load 额定负载				Stall 堵转	
	Operating Range	Rated	Speed (rpm)	Current (A)	Torque (mNm)	Speed (rpm)	Current (A)	Output P. (W)	Torque (mNm)	Current (A)
J36BL50M-S01	8-26	12	5300	0.46	23.5	4600	1.53	11.35	77.8	2.5
J36BL50M-S02	8-26	24	13800	0.32	30.0	11360	1.99	35.69	103.7	3.0
J36BL50M-S03	8-26	24	4327	0.18	45.0	3714	1.01	17.49	316.8	2.5
J36BL50M-S04	8-26	24	19400	0.44	18.0	18080	1.84	34.09	75.9	3.0
J36BL50M-S05	8-26	24	28518	0.64	32.37	23172	4.73	78.56	171.42	6.00

Customization

Notice: Data in this typical specification sheet are for other certain customer. Voltage, rated torque, speed, current, power and shaft extension feature & dimension can be changed to meet customer specific requirement.

注意：上述规格仅针对特定客户，电压、扭矩、转速、电流、功率、输出轴的特征和尺寸等都可以按照客户的特殊要求进行调整。

Curve



Remarks

The diameter is the same with 5 series brushed dc motor.

Dia 36mm Length 40mm BLDC motor



J36BL40

Weight: N/A (approx.)

Typical Application

Home Application: White Goods, Small Appliance, Fanner, Coffee Machine, Milk Tea

Machine 家用电器：白色家电，小家电，风扇，咖啡机，奶茶机

Medical Apparatus: Medical Pump, Surgery Tools, Medical Stirrer, centrifugal Machine 医疗器械：医疗泵，手术器械，搅拌机，离心机

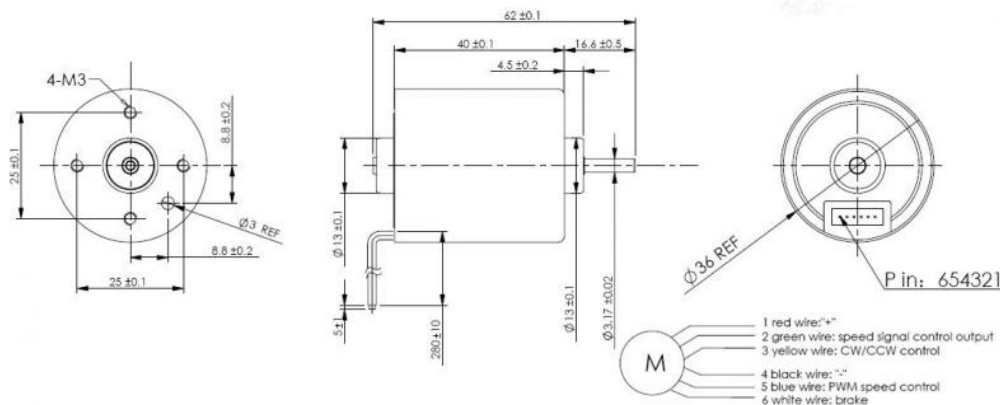
Industry Equipment: Electric Valve, Actuator, Micro Pump 工业设备：阀门，致动器，微型泵

Business Equipment: Printer, Copier, Projector, ATM, Vending Machine 商业设备：打印机，复印机，投影机，ATM机，售卖机

Personal Care: Hair Dryer, Electric Shaver, Massager 个人护理：风筒，电动剃须，按摩器

Key Features

Characteristic: CW & CCW, Signal function available, Locked rotor protection, Stepless speed regulation, Low noise, Low EMI, Long life 10000-50000hrs 特征：双转向，信号功能，锁定保护，无级调速，低噪音，低电磁干扰，超长寿命10000-50000小时

Tags: BLDC motor


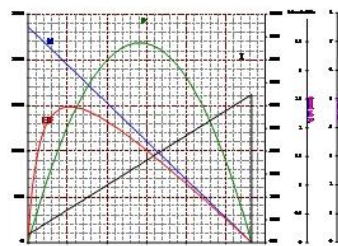
Model 型号	电压 Voltage(V)		No Load 空载		Rated Load 额定负载				Stall 堵转	
	Operating Range	Rated	Speed (rpm)	Current (A)	Torque (mNm)	Speed (rpm)	Current (A)	Output P. (W)	Torque (mNm)	Current (A)
J36BL40M-S01	8-26	12	2360	0.14	25.5	1830	0.69	4.9	174.10	2.5
J36BL40M-S02	8-26	12	7930	0.56	19.62	6800	1.89	13.97	83.22	3.0
J36BL40M-S03	8-26	24	6140	0.26	23.5	5190	0.85	12.8	229.05	2.5
J36BL40M-S04	8-26	24	16020	0.36	9.81	14940	0.98	15.35	90.68	2.5
J36BL40M-S05	8-26	24	27685	0.47	19.62	22191	2.88	45.59	98.89	5.0
J36BL40M-S06	12-40	36	20686	0.29	18	16726	1.30	31.53	94.02	2.5
J36BL40M-S07	8-26	24	7046	0.28	56.00	5156	1.80	30.23	208.79	2.5

Customization

Notice: Data in this typical specification sheet are for other certain customer. Voltage, rated torque, speed, current, power and shaft extension feature & dimension can be changed to meet customer specific requirement.

注意：上述规格仅针对特定客户，电压、扭矩、转速、电流、功率、输出轴的特征和尺寸等都可以按照客户的特殊要求进行调整。

Curve



Remarks

The diameter is the same with 5 series brushed dc motor.

Dia 36mm Length 30mm BLDC motor

J36BL30

Weight: N/A (approx.)



Typical Application

Home Application: White Goods, Small Appliance, Fanner, Electric Curtain 家用电器：白色家电，小家电，风扇，电动窗帘

Medical Apparatus: Medical Pump, Surgery Tools, Medical Stirrer, centrifugal Machine 医疗器械：医疗泵，手术器械，搅拌机，离心机

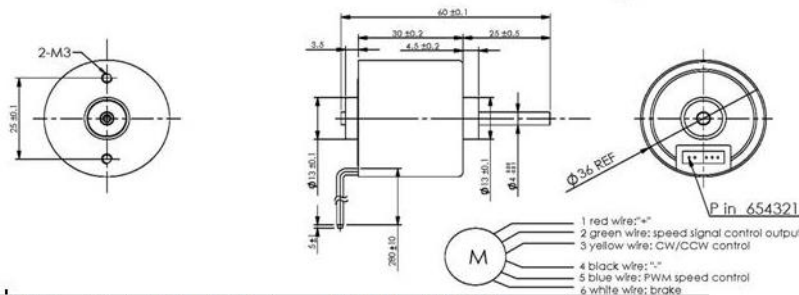
 Industry Equipment: Electric Valve, Actuator, Small Pump 工业设备：阀门，致动器，小型泵
 Business Equipment: Printer, Copier, Projector, ATM, Vending Machine 商业设备：打印机，复印机，投影机，ATM机，售卖机

Personal Care: Hair Dryer, Electric Shaver, Massager 个人护理：风筒，电动剃须，按摩器

Key Features

Characteristic: CW & CCW, Signal function available, Locked rotor protection, Stepless speed regulation, Low noise, Low EMI, Long life 10000-50000hrs 特征：双转向，信号功能，锁定保护，无级调速，低噪音，低电磁干扰，超长寿命10000-50000小时

Tags: BLDC motor



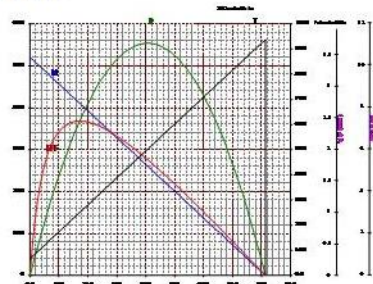
Model 型号	电压 Voltage(V)		No Load 空载		Rated Load 额定负载				Stall 堵转	
	Operating Range	Rated	Speed (rpm)	Current (A)	Torque (mNm)	Speed (rpm)	Current (A)	Output P. (W)	Torque (mNm)	Current (A)
J36BL30M-S01	5.8-12	6	2940	0.39	10.00	2270	0.91	2.38	44.05	2.5
J36BL30M-S02	8-26	12	5200	0.27	14.72	4260	0.90	6.56	81.30	2.5
J36BL30M-S03	8-26	24	6970	0.20	19.62	5640	0.76	11.58	102.51	2.5
J36BL30M-S04	8-26	24	15755	0.39	20.00	13213	1.59	27.67	123.9	3.5

Customization

Notice: Data in this typical specification sheet are for other certain customer. Voltage, rated torque, speed, current, power and shaft extension feature & dimension can be changed to meet customer specific requirement.

注意：上述规格仅针对特定客户，电压、扭矩、转速、电流、功率、输出轴的特征和尺寸等都可以按照客户的特殊要求进行调整。

Curve



Remarks

The diameter is the same with 5 series brushed dc motor.

Dia 36mm Length 26mm BLDC motor

J36BL26

Weight: N/A (approx.)



Typical Application

Home Application: White Goods, Small Appliance, Fanner, Electric Curtain 家用电器：白色家电，小家电，风扇，电动窗帘

Medical Apparatus: Medical Pump, Surgery Tools, Medical Stirrer, centrifugal Machine 医疗器械：医疗泵，手术器械，搅拌机，离心机

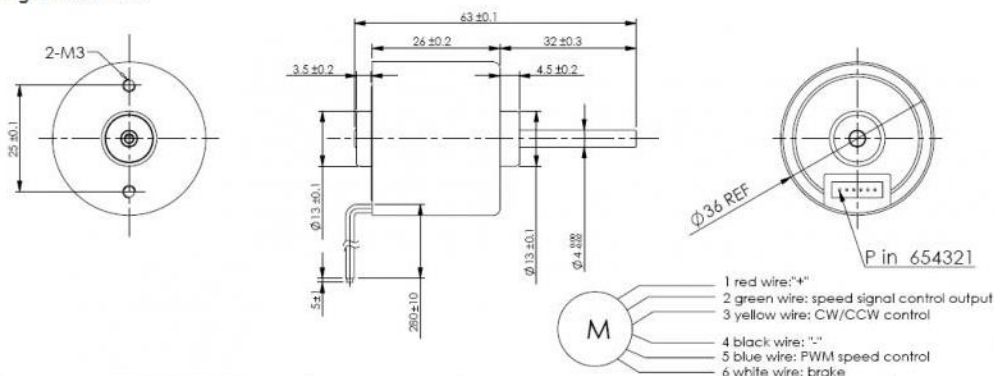
Industry Equipment: Electric Valve, Actuator, Micro Pump 工业设备：阀门，致动器，微型泵

Business Equipment: Printer, Copier, Projector, ATM, Vending Machine 商业设备：打印机，复印机，投影机，ATM机，售卖机

Personal Care: Hair Dryer, Electric Shaver, Massager 个人护理：风筒，电动剃须，按摩器

Key Features

Characteristic: CW & CCW, Signal function available, Locked rotor protection, Stepless speed regulation, Low noise, Low EMI, Long life 10000-50000hrs 特征：双转向，信号功能，锁定保护，无级调速，低噪音，低电磁干扰，超长寿命10000-50000小时

Tags: BLDC motor


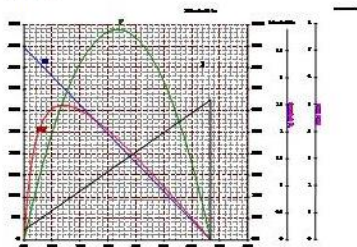
Model 型号	电压 Voltage(V)		No Load 空载		Rated Load 额定负载				Stall 堵转	
	Operating Range	Rated	Speed (rpm)	Current (A)	Torque (mNm)	Speed (rpm)	Current (A)	Output P. (W)	Torque (mNm)	Current (A)
J36BL26M-S01	8-26	9	2720	0.12	13.73	985	0.57	1.42	21.51	2.5
J36BL26M-S02	8-26	12	4460	0.18	10.79	3750	0.57	4.23	66.74	2.5
J36BL26M-S03	8-26	24	5998	0.12	15	4858	0.50	7.63	78.91	2.5
J36BL26M-S04	8-26	24	11990	0.35	14.715	9420	0.996	14.52	63.79	2.5
J36BL26M-S05	8-26	24	39845	0.26	9.81	33327	1.78	34.24	58.99	3.0

Customization

Notice: Data in this typical specification sheet are for other certain customer. Voltage, rated torque, speed, current, power and shaft extension feature & dimension can be changed to meet customer specific requirement.

注意：上述规格仅针对特定客户，电压、扭矩、转速、电流、功率、输出轴的特征和尺寸等都可以按照客户的特殊要求进行调整。

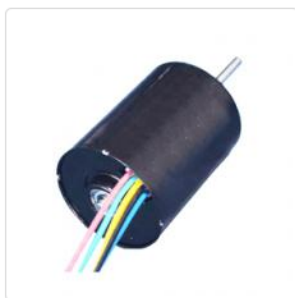
Curve



Remarks

The diameter is the same with 5 series brushed dc motor.

Dia 30mm Length 40mm BLDC motor



J30BL40

Weight: 95g (approx.)

Typical Application

Home Application: Water pumps, Air pumps, Small Appliance, Fanner, Electric Curtain 家用电器: 水泵, 气泵, 小家电, 风扇, 电动窗帘, 水泵, 气泵

Medical Apparatus: Medical Pump, Infusion pump, Surgery Tools, Medical Stirrer, centrifugal Machine 医疗器械: 医疗泵, 输液泵, 手术器械, 搅拌机, 离心机

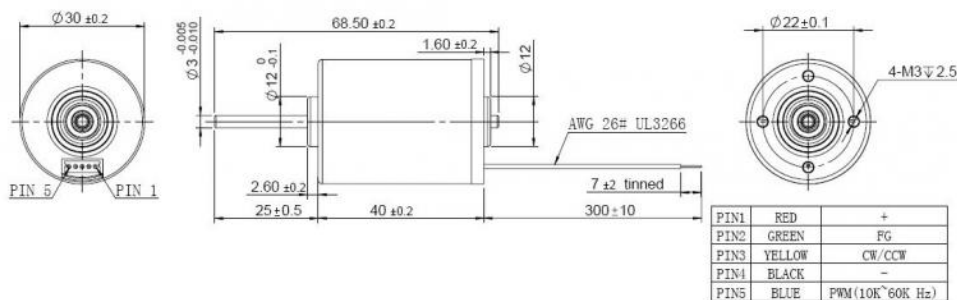
Industry Equipment: Electric Valve, Actuator, Micro Pumps 工业设备: 阀门, 致动器, 水泵, 气泵, 液泵, 油泵

Business Equipment: Printer, Copier, Projector, ATM, Vending Machine 商业设备: 打印机, 复印机, 投影机, ATM机, 售卖机

Key Features

Characteristic: CW & CCW, Signal function available, Locked rotor protection, Stepless speed regulation, Low noise, Low EMI, Long life 10000-50000hrs 特征: 双转向, 信号功能, 锁定保护, 无级调速, 低噪音, 低电磁干扰, 超长寿命10000-50000小时

Tags: BLDC motor



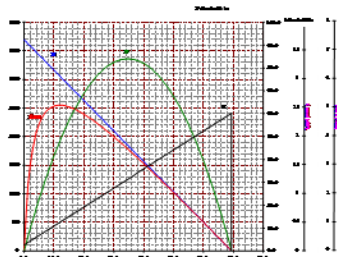
Model 型号	电压 Voltage(V)		No Load 空载		Rated Load 额定负载				Stall 堵转	
	Operating Range	Rated	Speed (rpm)	Current (A)	Torque (mNm)	Speed (rpm)	Current (A)	Output P. (W)	Torque (mNm)	Current (A)
J30BL40M-S01	5-12	6	1992	0.14	15	1464	0.71	2.30	56.54	0.9
J30BL40M-S02	8-26	12	3698	0.10	10	3165	0.44	3.32	69.43	2.8
J30BL40M-S03	8-26	12	3986	0.14	30	2830	1.24	8.89	103.4	2.8
J30BL40M-S04	8-26	24	3615	0.06	10	3139	0.23	3.29	76.02	2.4
J30BL40M-S05	8-26	24	5475	0.09	30	4384	0.84	13.77	150.6	2.4

Customization

Notice: Data in this typical specification sheet are for other certain customer. Voltage, rated torque, speed, current, power and shaft extension feature & dimension can be changed to meet customer specific requirement.

注意: 上述规格仅针对特定客户, 电压、扭矩、转速、电流、功率、输出轴的特征和尺寸等都可以按照客户的特殊要求进行调整。

Curve



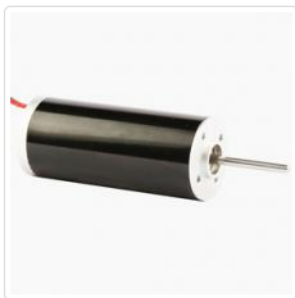
Remarks

The motor size is similar with brushed motor JRF-385.

Dia 28mm Length 67mm BLDC motor

J28BL67

Weight: N/A (approx.)



Typical Application

Home Application: White Goods, SmallAppliance, Fanner, Electric Curtain 家用电器：白色家电，小家电，电风扇，电动窗帘

Medical Apparatus: Medical Pump, Blood PressureMeter, Surgery Tools, Medical Stirrer, centrifugal Machine 医疗器械：医疗泵，血压计，手术器械，搅拌机，离心机

Industry Equipment: Electric Valve, Portable Screwdriver, Air Pump, Water Pump, Vacuum Pump 电动工具：电动阀门，手持电批，气泵，水泵，真空泵

Business Equipment: Printer, Copier, Projector, Scanner, Cash Register 商业设备：打印机，复印机，投影机，扫描仪，点钞机

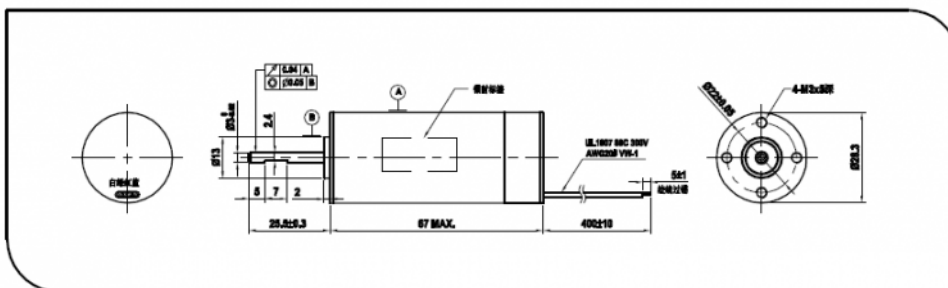
Personal Care: Hair Dryer, Electric Shaver, Massager 个人护理：风筒，电动剃须，按摩器

Key Features

Starting voltage stability, small volume, large torque, low noise, long life, high efficiency, accuracy and so on.

Tags: BLDC motor

外形尺寸 MOTOR OUTLINE



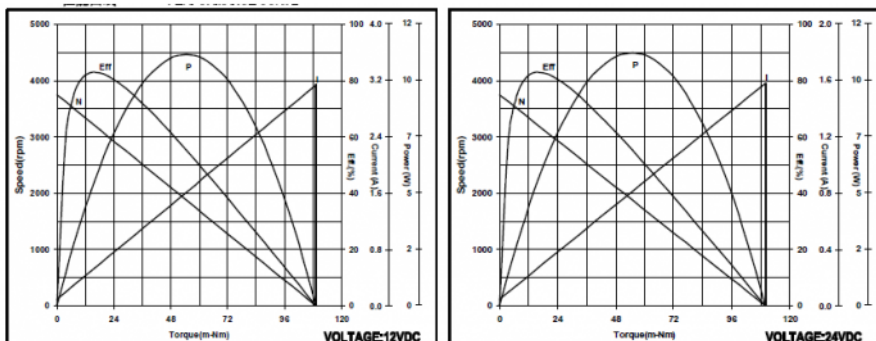
电压 VOLTAGE (Vdc)	空载转速 NO LOAD SPEED (rpm)	空载电流 NO LOAD CURRENT (mA)	额定扭力 RATED TORQUE (g-cm)	额定转速 RATED SPEED (rpm)	额定电流 RATED CURRENT (mA)	额定功率 RATED OUTPUT (W)	转向 ROTATION DIRECTION
12	3749	≤100	160	3201	≤537	5.3	CW
24	3750	≤60	160	3204	≤270	5.3	CW

Customization

Notice: Data in this typical specification sheet are for other certain customer. Voltage, rated torque, speed, current, power and shaft extension feature & dimension can be changed to meet customer specific requirement.

注意：上述规格仅针对特定客户，电压、扭矩、转速、电流、功率、输出轴的特征和尺寸等都可以按照客户的特殊要求进行调整。

Curve



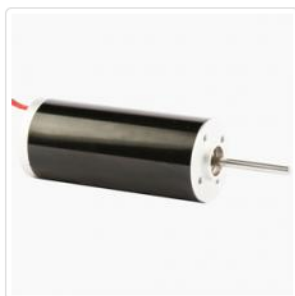
Remarks

The diameter is the same with 3 series brushed dc motor.

Dia 28mm Length 57mm BLDC motor

J28BL57

Weight: N/A (approx.)



Typical Application

Home Application: White Goods, SmallAppliance, Fanner, Electric Curtain 家用电器：白色家电，小家电，电风扇，电动窗帘

Medical Apparatus: Medical Pump, Blood PressureMeter, Surgery Tools, Medical Stirrer, centrifugal Machine 医疗器械：医疗泵，血压计，手术器械，搅拌机，离心机

Industry Equipment: Electric Valve, Portable Screwdriver, Air Pump, Water Pump, Vacuum Pump 电动工具：电动阀门，手持电批，气泵，水泵，真空泵

Business Equipment: Printer, Copier, Projector, Scanner, Cash Register 商业设备：打印机，复印机，投影机，扫描仪，点钞机

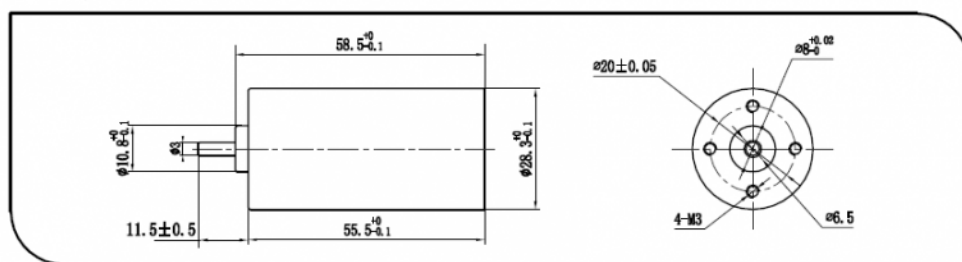
Personal Care: Hair Dryer, Electric Shaver, Massager 个人护理：风筒，电动剃须，按摩器

Key Features

Start the voltage stability, small size, large torque, low noise, long life, high efficiency, precision and so on

Tags: BLDC motor

外形尺寸 MOTOR OUTLINE



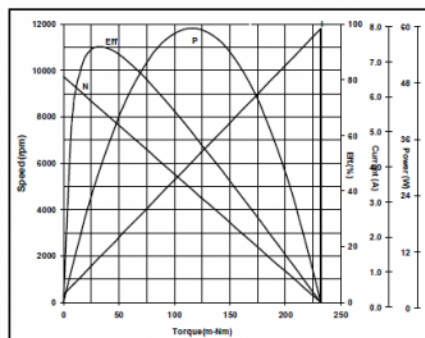
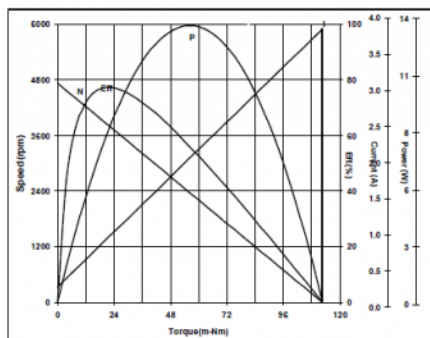
电压 VOLTAGE (Vdc)	空载转速 NO LOAD SPEED (rpm)	空载电流 NO LOAD CURRENT (mA)	额定扭力 RATED TORQUE (g-cm)	额定转速 RATED SPEED (rpm)	额定电流 RATED CURRENT (mA)	额定功率 RATED OUTPUT (W)	转向 ROTATION DIRECTION
12	4725	≤220	215	3821	≤930	8.62	CCW/CW
24	9730	≤220	332	8336	≤1315	29.01	CCW/CW

Customization

Notice: Data in this typical specification sheet are for other certain customer. Voltage, rated torque, speed, current, power and shaft extension feature & dimension can be changed to meet customer specific requirement.

注意：上述规格仅针对特定客户，电压、扭矩、转速、电流、功率、输出轴的特征和尺寸等都可以按照客户的特殊要求进行调整。

Curve



Remarks

The diameter is the same with 3 series brushed dc motor.

Dia 28mm Length 44mm BLDC motor



J28BL44

Weight: 75g (approx.)

Typical Application

Home Application: White Goods, SmallAppliance, Fanner, Electric Curtain 家用电器：白色家电，小家电，电风扇，电动窗帘

Medical Apparatus: Medical Pump, Blood PressureMeter, Surgery Tools, Medical Stirrer, centrifugal Machine 医疗器械：医疗泵，血压计，手术器械，搅拌机，离心机

Industry Equipment: Electric Valve, Portable Screwdriver, Air Pump, Water Pump, Vacuum Pump 电动工具：电动阀门，手持电批，气泵，水泵，真空泵

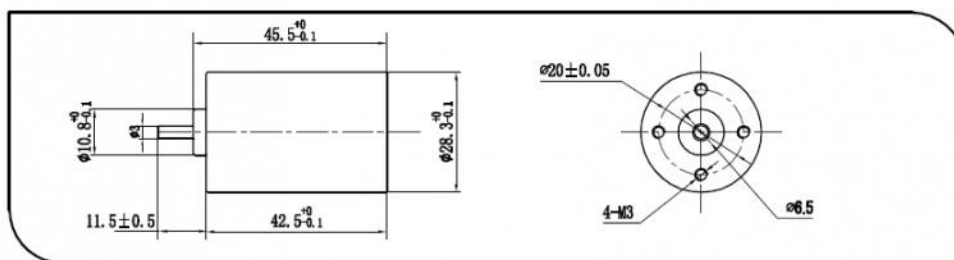
Key Features

High power density, small size, compact structure, the usage of vector control, fast dynamic response, high efficiency, low noise, safe and reliable, widely used in civilian areas of home

appliances

Tags: BLDC motor

外形尺寸 MOTOR OUTLINE



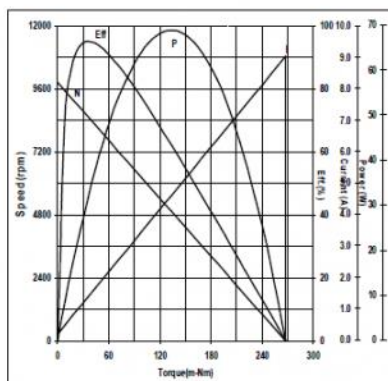
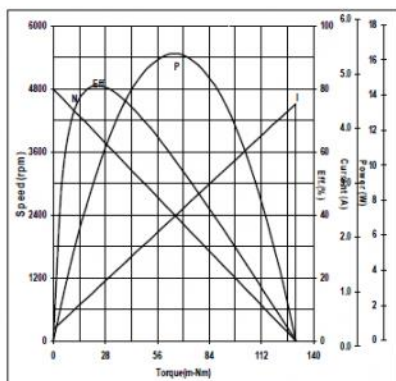
电压 VOLTAGE (Vdc)	空载转速 NO LOAD SPEED (rpm)	空载电流 NO LOAD CURRENT (mA)	额定扭力 RATED TORQUE (g-cm)	额定转速 RATED SPEED (rpm)	额定电流 RATED CURRENT (mA)	额定功率 RATED OUTPUT (W)	转向 ROTATION DIRECTION
12	4803	≤220	236	3935	≤997	9.72	CCW/CW
24	9852	≤220	361	8522	≤1411	32.34	CCW/CW

Customization

Notice: Data in this typical specification sheet are for other certain customer. Voltage, rated torque, speed, current, power and shaft extension feature & dimension can be changed to meet customer specific requirement.

注意：上述规格仅针对特定客户，电压、扭矩、转速、电流、功率、输出轴的特征和尺寸等都可以按照客户的特殊要求进行调整。

Curve



Remarks

The diameter is the same with 3 series brushed dc motor.

Dia 28mm Length 38mm BLDC motor

J28BL38

Weight: N/A (approx.)



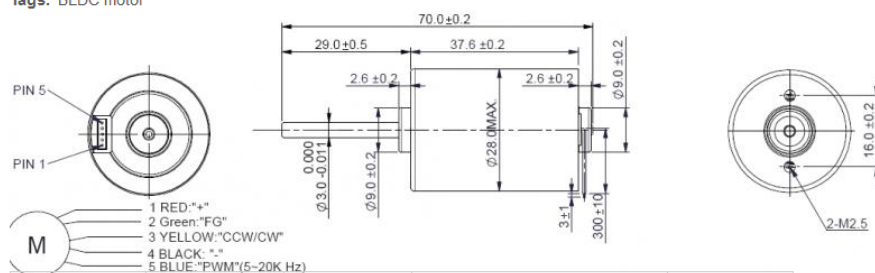
Typical Application

Home Application: White Goods, Small Appliance, Fanner, Electric Curtain 家用电器：白色家电，小家电，电风扇，电动窗帘
 Medical Apparatus: Medical Pump, Blood Pressure Meter, Surgery Tools, Medical Stirrer, centrifugal Machine 医疗器械：医疗泵，血压计，手术器械，搅拌机，离心机
 Industry Equipment: Electric Valve, Portable Screwdriver, Air Pump, Water Pump, Vacuum Pump 电动工具：电动阀门，手持电批，气泵，水泵，真空泵
 Business Equipment: Printer, Copier, Projector, Scanner, Cash Register 商业设备：打印机，复印机，投影机，扫描仪，点钞机
 Personal Care: Hair Dryer, Electric Shaver, Massager 个人护理：风筒，电动剃须，按摩器

Key Features

Characteristic: CW & CCW, Signal function available, Locked rotor protection, Stepless speed regulation, Low noise, Low EMI, Long life 10000-30000hrs 特征：双转向，信号功能，锁定保护，无级调速，低噪音，低电磁干扰，超长寿命10000-30000小时

Tags: BLDC motor



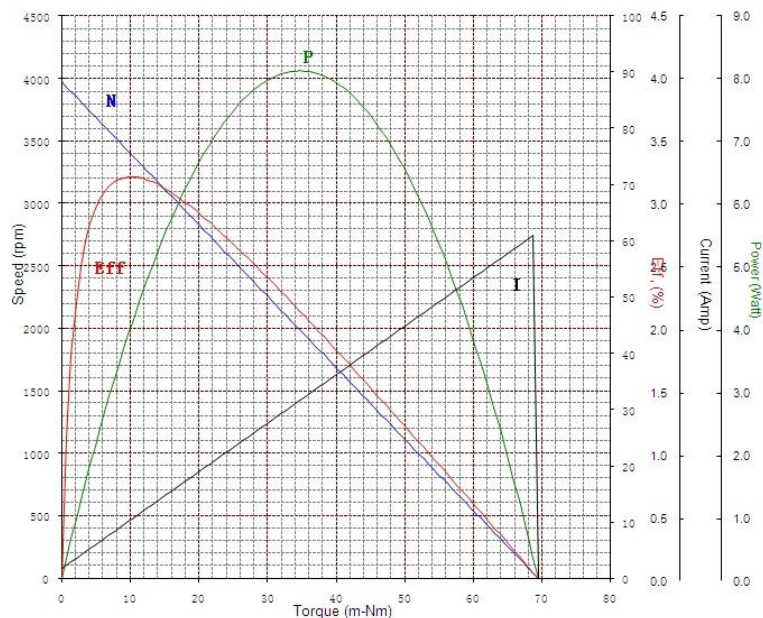
Model 型号	电压 Voltage(V)		No Load 空载			Rated Load 额定负载			Stall 堵转	
	Operating Range	Rated	Speed (rpm)	Current (A)	Torque (mNm)	Speed (rpm)	Current (A)	Output P. (W)	Torque (mNm)	Current (A)
J28BL38M-S01	6-12	7.4	4400	0.15	7.0	4100	0.68	3.0	38.0	1.6
J28BL38M-S02	8-26	12	3900	0.09	12.0	3200	0.58	4.1	69.4	1.6
J28BL38M-S03	8-26	24	7640	0.15	18.0	4700	0.9	9.0	48.0	2.50
J28BL38M-S04	8-26	24	9400	0.18	24.0	5800	1.38	14.6	60.0	2.50
J28BL38M-S05	8-26	24	16000	0.30	20.0	13000	1.75	27.4	40.0	2.50

Customization

Notice: Data in this typical specification sheet are for other certain customer. Voltage, rated torque, speed, current, power and shaft extension feature & dimension can be changed to meet customer specific requirement.

注意：上述规格仅针对特定客户，电压、扭矩、转速、电流、功率、输出轴的特征和尺寸等都可以按照客户的特殊要求进行调整。

Curve



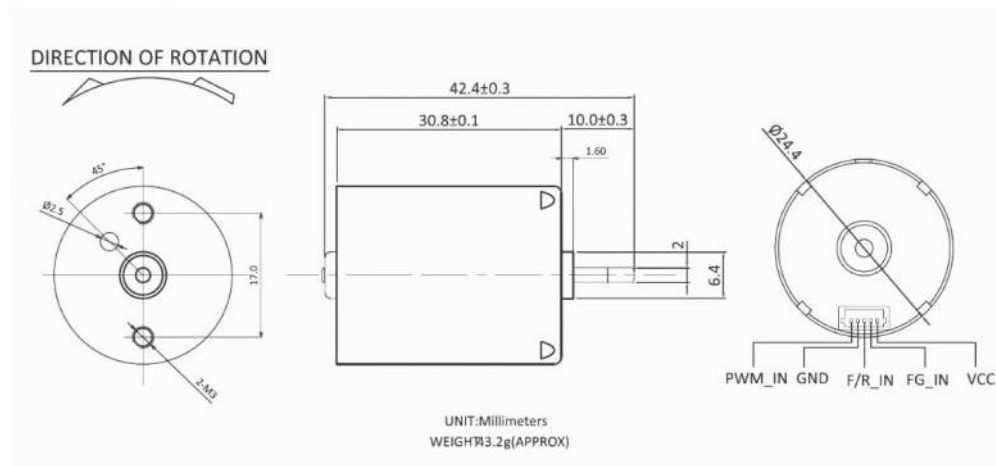
Remarks

The same size with brushed motor JRF-385.

BLDC motor J24BL30

J24BL30

Tags: Planetary Gearbox motor

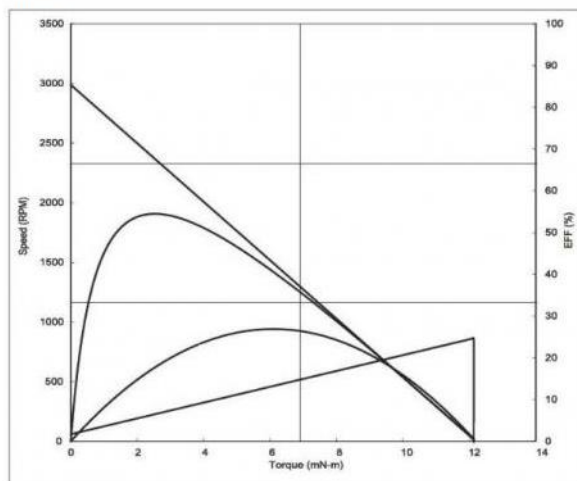


型号 MODEL	电压 VOLTAGE		无负荷 NO LOAD		最大效率点 AT MAXIMUM EFFICIENCY					起动 STALL		
	使用范围 OPERATING RANGE	额定值 NOMINAL	转速 SPEED	电流 CURRENT	转速 SPEED	电流 CURRENT	转矩 TORQUE	功率 OUTPUT	转矩 TORQUE	电流 CURRENT		
			r/min	A	r/min	A	mN·m	g·cm	W	mN·m	g·cm	A
JRB-370D-020049P0	3-24V	DC5V	2988	0.085	2368	0.325	2.530	25.30	0.88	12.19	121.9	1.24

马达性能及转轴长度可按客户的需要设定。

Motors specification and shaft length can be tailor-made according to customer's requirements.

Curve



At a constant voltage 5.00 Volts
Direction CCW

At No Load
Speed : 2988 RPM
Current : 0.085 AMPS

At stall (Extrapolated)
Torque : 12.19 mN-m
Current : 1.240 AMPS

At maximum efficiency
Efficiency: 54.5 %
Torque : 2.530 mN-m
Speed : 2368 RPM
Current : 0.325 AMPS
Output : 0.88 Watts

At maximum Power output
Output : 1.344 Watts
Torque : 6.097 mN-m
Speed : 1714 RPM
Current : 0.58 AMPS

Characteristics
Torque constant : 10.560 mN-m/AMP
E.M.F. constant : 10.560 mV/rad/sec
Dynamic resistance: 4.0334 Ohms
Motor regulation : 245.07 RPM/mN-m

Issued by QA Reliability Testing Center

COMPUTER PRINT-OUT
NOMINAL MOTOR CURVES
Performance and characteristics
are measured based on tested
motor samples only

Dia 24mm Length 18mm BLDC motor



J24BL18

Weight: N/A (approx.)

Typical Application

Home Application: White Goods, Small Appliance, Small Fanner, Electric Cooker 家用电器：白色家电，小家电，小型风扇，电饭煲

Medical Apparatus: Medical Pump, Medical Stirrer, Centrifugal Machine 医疗器械：医疗泵，医用搅拌器，离心机

Industry Apparatus: Electric Valve, Portable Screwdriver, Air/Water/Vacuum Pumps 工业设备：电动阀门，手持电批，气泵，水泵，真空泵

Business Equipment: Printer, Copier, Projector, Scanner, Cash Register, Card Sender 商业设备：打印机，复印机，投影机，扫描仪，点钞机，发卡机

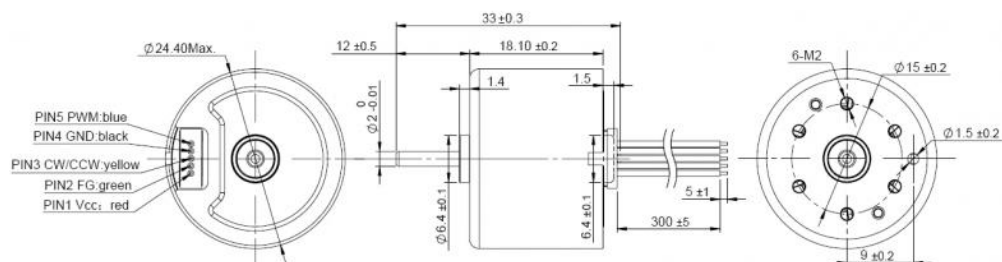
Personal Care: Hair Curler, Hair Straightener, Hair Dryer, Electric Shaver, Massager, Vibrator

个人护理：卷发器，风筒，电动须刨，按摩器，直发器，震动器

Key Features

Characteristic: CW & CCW, Signal function available, Locked rotor protection, Stepless speed regulation, Low noise, Low EMI, Long life 5000-50000hrs 特征：双转向，信号功能，锁定保护，无级调速，低噪音，低电磁干扰，超长寿命5000-50000小时

Tags: BLDC motor



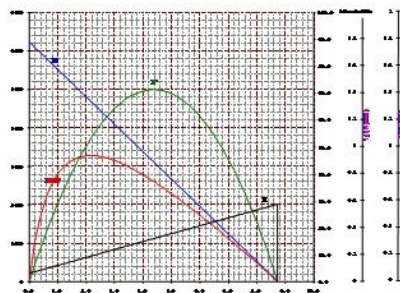
Model 型号	电压 Voltage(V)		No Load 空载		Rated Load 额定负载				Stall 堵转	
	Operating Range	Rated	Speed (rpm)	Current (A)	Torque (mNm)	Speed (rpm)	Current (A)	Output P. (W)	Torque (mNm)	Current (A)
J24BL18M-S01	5-12	6	9260	0.21	2.45	7490	0.61	1.93	6.2	1.20
J24BL18M-S02	8-26	12	6520	0.08	2.45	4660	0.24	1.2	8.4	0.65
J24BL18M-S03	8-26	12	12420	0.127	2.94	9580	0.43	2.96	12.8	1.47
J24BL18M-S04	8-26	24	12770	0.065	5.89	9280	0.41	5.72	21.5	1.32
J24BL18M-S05	8-26	24	8660	0.055	2.94	6690	0.169	2.06	12.8	0.55

Customization

Notice: Data in this typical specification sheet are for other certain customer. Voltage, rated torque, speed, current, power and shaft extension feature & dimension can be changed to meet customer specific requirement.

注意：上述规格仅针对特定客户，电压、扭矩、转速、电流、功率、输出轴的特征和尺寸等都可以按照客户的特殊要求进行调整。

Curve



Remarks

The diameter is the same with 2 series brushed dc motor.

Dia 22mm Length 38mm BLDC motor



J22BL38

Weight: N/A (approx.)

Typical Application

Home Application: Small Appliance, Electric Curtain, Electric Windows/Door, Small Cross-flow Fan 家用电器: 小家电, 电动窗帘, 电动门窗, 小型贯流风机

Medical Apparatus: Medical Pump, Surgery Tools, Medical Stirrer, centrifugal Machine 医疗器械: 医疗泵, 手术器械, 搅拌机, 离心机

Industry Facilities: Printing Machine, Binding Machine, Cutting Machine, Electric Valve 工业设备: 印刷机, 装订机, 裁剪机, 电动阀门

Business Equipment: Cash Register, ATM, TV set Frame 商业设备: 点钞机, ATM机, 电视机架

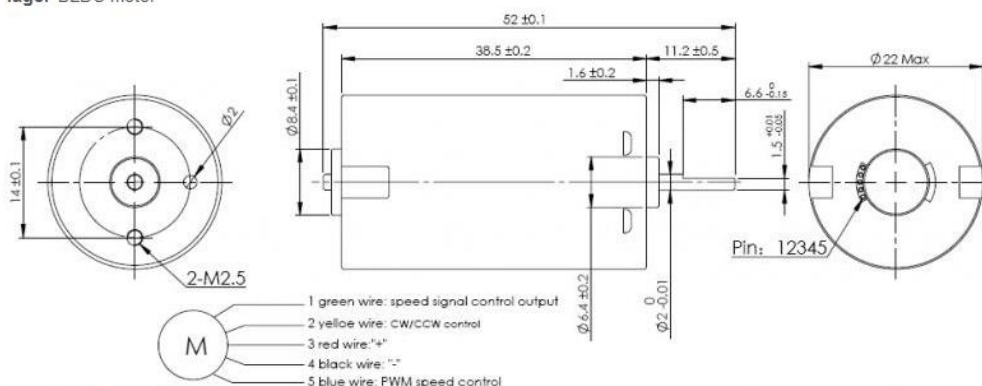
Personal Care: Massager, Vibrator, Malaxation Apparatus, Scrub Apparatus 个人护理: 按摩器, 震动器, 揉捏器, 磨砂器

器, 震动器, 揉捏器, 磨砂器

Key Features

Characteristic: CW & CCW, Signal function available, Locked rotor protection, Stepless speed regulation, Low noise, Low EMI, Long life 3000-15000hrs 特征: 双转向, 信号功能, 锁定保护, 无级调速, 低噪音, 低电磁干扰, 超长寿命3000-15000小时

Tags: BLDC motor



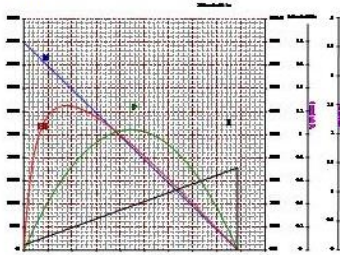
Model 型号	电压 Voltage(V)		No Load 空载		Rated Load 额定负载				Starting 启动	
	Operating Range	Rated	Speed (rpm)	Current (A)	Torque (mNm)	Speed (rpm)	Current (A)	Output P. (W)	Torque (mNm)	Current (A)
J22BL38M-S01	5-14	6	4000	0.09	4.61	3075	0.45	1.49	20.0	0.8
J22BL38M-S02	8-26	12	4480	0.04	3.92	3490	0.19	1.44	17.7	0.85
J22BL38M-S03	8-26	24	9980	0.08	5.886	8090	0.33	4.98	30.7	0.75

Customization

Notice: Data in this typical specification sheet are for other certain customer. Voltage, rated torque, speed, current, power and shaft extension feature & dimension can be changed to meet customer specific requirement.

注意: 上述规格仅针对特定客户, 电压、扭矩、转速、电流、功率、输出轴的特征和尺寸等都可以按照客户的特殊要求进行调整。

Curve



Remarks

The motor size is closed to brushed motor JRF-180.

Dia 16mm Length 25mm BLDC motor

J16BL25

Weight: N/A (approx.)



Typical Application

Home Application: White Goods, Small Appliance, Kitchen Appliance, Smart Home, Micro

Actuate家用电器: 白色家电, 小家电, 厨房电器, 智能家居, 微型致动器

Automobile Parts: Micro Pump, Switcher 汽车部件: 微型泵, 切换器

Medical Apparatus: Medical Pump, Liquid Pump, Gas Pump 医疗器械: 医疗泵, 液泵, 气泵

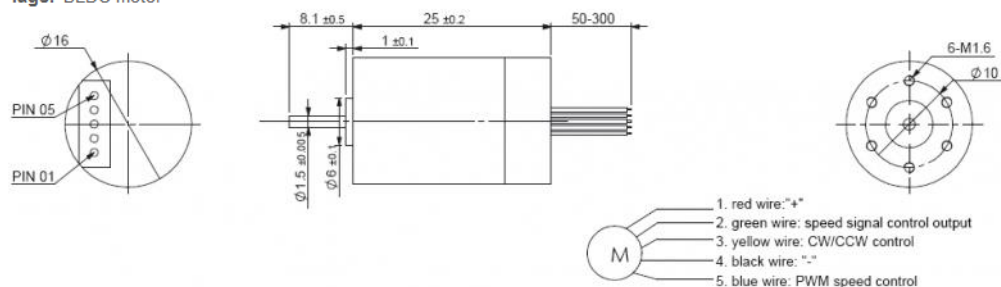
Industry Equipment: Micro Pump, Micro Valve, Instrument, Meter 电动工具: 微型泵, 微型阀门, 仪器仪表

Business Equipment: Printer, Copier, Projector, Scanner, Cash Register 商业设备: 打印机, 复印机, 投影机, 扫描仪, 点钞机

Personal Care: Skin Care, Beauty Apparatus 个人护理: 皮肤护理, 美容器材

Key Features

Characteristic: CW & CCW, Signal function available, Locked rotor protection, Stepless speed regulation, Low noise, Low EMI, Long life 3000-30000hrs 特征: 双转向, 信号功能, 锁定保护, 无极调速, 低噪音, 低电磁干扰, 超长寿命3000-30000小时

Tags: BLDC motor


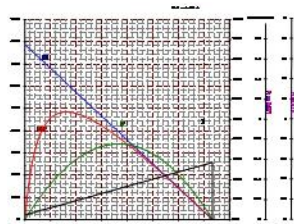
Model 型号	电压 Voltage(V)		No Load 空载		Rated Load 额定负载				Stall 堵转	
	Operating Range	Rated	Speed (rpm)	Current (A)	Torque (mNm)	Speed (rpm)	Current (A)	Output P. (W)	Torque (mNm)	Current (A)
J16BL25M-S01	2-5	3.7	7500	0.145	0.687	5569	0.297	0.40	2.44	0.35
J16BL25M-S02	5-13	6	7800	0.050	0.687	6500	0.150	0.46	4.17	0.9
J16BL25M-S03	5-13	12	7850	0.034	0.687	6570	0.080	0.475	4.26	0.8
J16BL25M-S04	5-13	12	49265	0.314	0.687	47462	0.538	3.413	18.76	0.8
J16BL25M-S05	5-13	6	9995	0.082	1.001	8045	0.261	0.843	5.087	0.9
J16BL25M-S06	5-13	12	26600	0.118	1.501	22565	0.415	3.547	9.895	0.8

Customization

Notice: Data in this typical specification sheet are for other certain customer. Voltage, rated torque, speed, current, power and shaft extension feature & dimension can be changed to meet customer specific requirement.

注意: 上述规格仅针对特定客户, 电压、扭矩、转速、电流、功率、输出轴的特征和尺寸等都可以按照客户的特殊要求进行调整。

Curve



Remarks

The same size with brushed motor JRF-050.

Dia 42mm JBG4275 BLDC gearbox motor



JBG4275

Weight: 450g (approx.)

Typical Application

Home Application: Electric door, Electric Window, Electric Curtain, Electric Awning 家用电器：电动门，电动窗，电动窗帘，电动遮阳棚

Industry Facility: Transmission Equipment, Gear System, Actuator 工业设备：传动机械，齿轮系统，致动器

Electronic Equipment: Electric Valve, Switcher, Lighting Adjustor, Small Percussion Drill 电控设备：电动阀门，切换器，灯光调节器，电动扳手

Business Equipment: Electric Gate, Banking Facility, ATM, Vending Machine 商业设备：电动门禁，银行设施，ATM机，售卖机

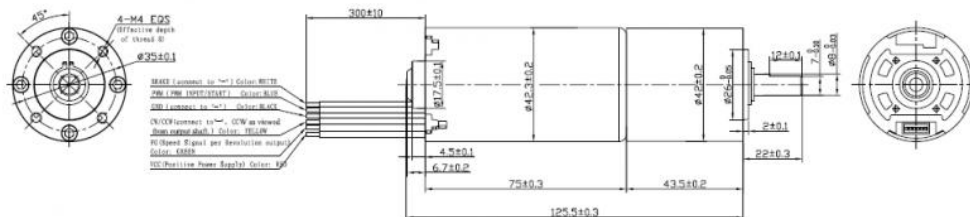
Personal Care: Massager 个人护理：按摩器

Key Features

Characteristic: CW & CCW, Signal function available, Locked rotor protection, Stepless speed regulation, Low noise, Low EMI

特征：双转向，信号功能，锁定保护，无级调速，低噪音，低电磁干扰

Tags: BLDC gearbox motor



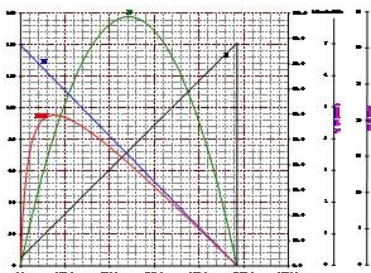
Model 型号	电压 Voltage(V)		No Load 空载		Rated Load 额定负载				Starting 启动	
	Operating Range	Rated	Speed (rpm)	Current (A)	Torque (Nm)	Speed (rpm)	Current (A)	Output P. (W)	Torque (Nm)	Current (A)
JBG4275-S01 (Gear Ratio 25:1)	8-26	24	140	0.24	2.03	111	1.67	23.48	9.7	2.5
JBG4275-S02 (Gear Ratio 49)	8-26	24	121	0.69	4.4	92	3.65	24.86	19.4	5.0
JBG4275-S03 (Gear Ratio 124.6)	8-26	18	30	0.41	7.00	26	2.11	18.72	43	3.0
JBG4275-S04 (Gear Ratio 67)	8-26	24	76	0.22	5.00	54	1.57	28.32	17.4	2.5

Customization

Notice: Data in this typical specification sheet are for other certain customer. Voltage, rated torque, speed, current, power, gear box ratio & dimension, shaft extension feature & dimension can be changed to meet customer specific requirement.

注意：上述规格仅针对特定客户，电压、扭矩、转速、电流、功率、齿轮箱的减速比和尺寸、输出轴的特征和尺寸等都可以按照客户的特殊要求进行调整。

Curve



Dia 42mm JBG4260 BLDC gearbox motor



JBG4260

Weight: 400g (approx.)

Typical Application

Home Application: Electric door, Electric Window, Electric Curtain, Electric Awning 家用电器：电动门，电动窗，电动窗帘，电动遮阳棚

Industry Facility: Transmission Equipment, Gear System, Actuator 工业设备：传动机械，齿轮系统，致动器

Electronic Equipment: Electric Valve, Switcher, Lighting Adjustor, Small Percussion Drill 电控设备：电动阀门，切换器，灯光调节器，电动扳手

Business Equipment: Electric Gate, Banking Facility, ATM, Vending Machine 商业设备：电动门禁，银行设施，ATM机，售卖机

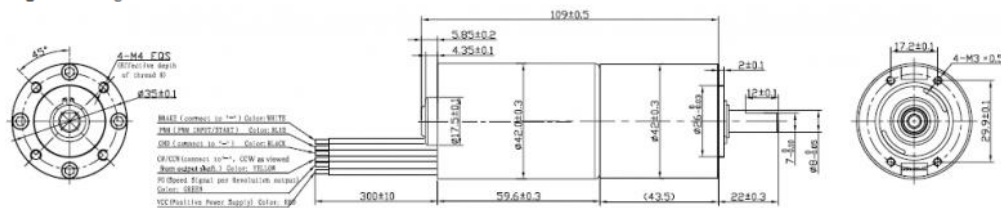
Personal Care: Massager 个人护理：按摩器

Key Features

Characteristic: CW & CCW, Signal function available, Locked rotor protection, Stepless speed regulation, Low noise, Low EMI

特征：双转向，信号功能，锁定保护，无级调速，低噪音，低电磁干扰

Tags: BLDC gearbox motor



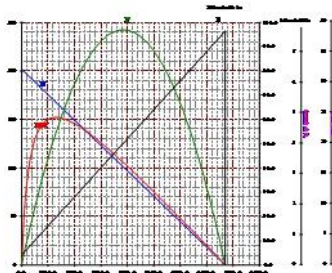
Model 型号	电压 Voltage(V)		No Load 空载		Rated Load 额定负载				Starting 启动	
	Operating Range	Rated	Speed (rpm)	Current (A)	Torque (Nm)	Speed (rpm)	Current (A)	Output P. (W)	Torque (Nm)	Current (A)
JBG4260-S01 (Gear Ratio 25)	8-26	24	202	0.32	1.7	157	1.95	28.03	7.7	3.0
JBG4260-S02 (Gear Ratio 100)	8-26	24	28	0.27	3.03	24	0.69	7.68	23	2.5
JBG4260-S03 (Gear Ratio 222)	8-26	24	14	0.22	7.01	12	0.78	9.02	52.3	2.5

Customization

Notice: Data in this typical specification sheet are for other certain customer. Voltage, rated torque, speed, current, power, gear box ratio & dimension, shaft extension feature & dimension can be changed to meet customer specific requirement.

注意：上述规格仅针对特定客户，电压、扭矩、转速、电流、功率、齿轮箱的减速比和尺寸、输出轴的特征和尺寸等都可以按照客户的特殊要求进行调整。

Curve



Dia 42mm JBG4235 BLDC gearbox motor



JBG4235

JBG4235

Typical Application

Home Application: Electric door, Electric Window, Electric Curtain, Electric Awning 家用电器：电动门，电动窗，电动窗帘，电动遮阳棚

Industry Facility: Transmission Equipment, Gear System, Actuator 工业设备：传动机械，齿轮系统，致动器

Electronic Equipment: Electric Valve, Switcher, Lighting Adjustor, Small Percussion Drill 电子设备：电动阀门，切换器，灯光调节器，电动扳手

Business Equipment: Electric Gate, Banking Facility, ATM, Vending Machine 商业设备：电动门禁，银行设施，ATM机，售卖机

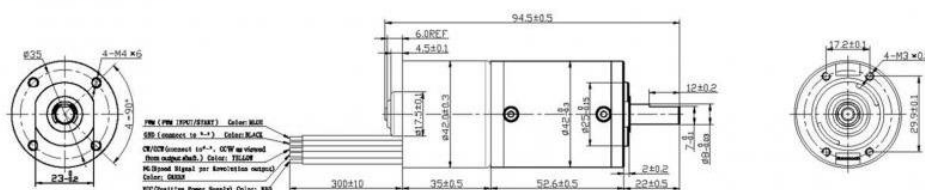
Personal Care: Massager 个人护理：按摩器

Key Features

Characteristic: CW & CCW, Signal function available, Locked rotor protection, Stepless speed regulation, Low noise, Low EMI

特征：双转向，信号功能，无级调速，低噪音，低电磁干扰

Tags: BLDC gearbox motor



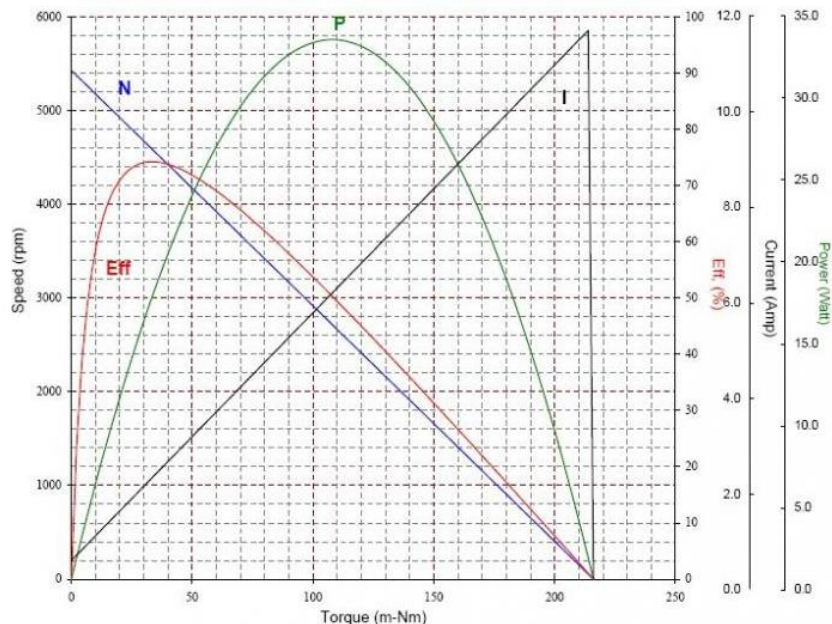
Model 型号	电压 Voltage(V)		No Load 空载		Rated Load 额定负载				Stall 堵转	
	Operating Range	Rated	Speed (rpm)	Current (A)	Torque (Nm)	Speed (rpm)	Current (A)	Output P. (W)	Torque (Nm)	Current (A)
JBG4235-S01 (Gear Ratio 294)	8-26	12	24	0.36	5.10	16	2.27	8.54	25.2	3.0
JBG4235-S02 (Gear Ratio 294)	8-26	24	16	0.21	7.21	12	1.49	9.01	25.4	2.5
JBG4235-S03 (Gear Ratio 250.7)	8-26	24	7.8	0.1	8.03	5.6	0.4	4.69	12.36	2.5

Customization

Notice: Data in this typical specification sheet are for other certain customer. Voltage, rated torque, speed, current, power, gear box ratio & dimension, shaft extension feature & dimension can be changed to meet customer specific requirement.

注意：上述规格仅针对特定客户，电压、扭矩、转速、电流、功率、齿轮箱的减速比和尺寸、输出轴的特征和尺寸等都可以按照客户的特殊要求进行调整。

Curve



Dia 36mm JBG3657 BLDC gearbox motor



JBG3657

Weight: 350g (approx.)

Typical Application

Home Application: Electric door, Electric Window, Electric Curtain, Electric Awning 家用电器: 电动门, 电动窗, 电动窗帘, 电动遮阳棚

Industry Facility: Transmission Equipment, Gear System, Actuator 工业设备: 传动机械, 齿轮系统, 致动器

Electronic Equipment: Electric Valve, Small Switcher, Lighting Adjustor, Small Percussion Drill 电控设备: 电动阀门, 小型转换器, 灯光调节器, 电动扳手

Business Equipment: Electric Gate, Banking Facility, ATM, Vending Machine 商业设备: 电动门禁, 银行设施, ATM机, 售卖机

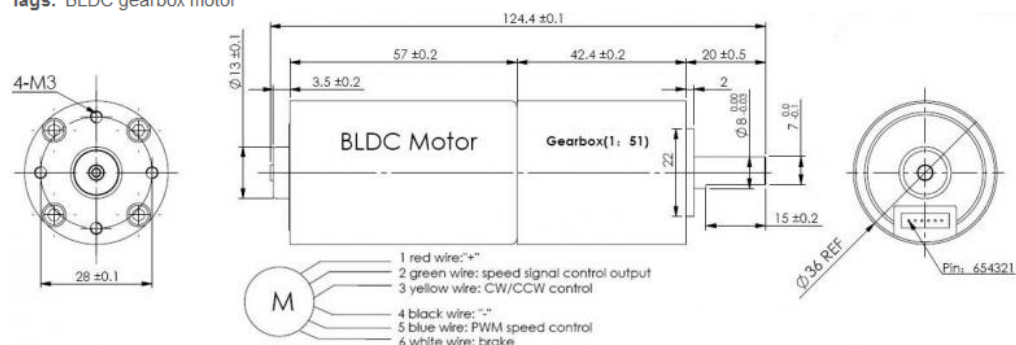
Personal Care: Massager 个人护理: 按摩器

Key Features

Characteristic: CW & CCW, Signal function available, Locked rotor protection, Stepless speed regulation, Low noise, Low EMI

特征: 双转向, 信号功能, 锁定保护, 无级调速, 低噪音, 低电磁干扰

Tags: BLDC gearbox motor



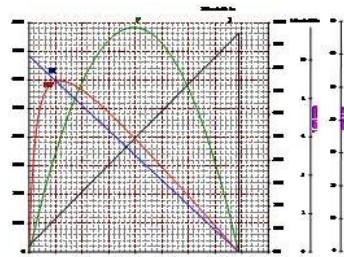
Model 型号	电压 Voltage(V)		No Load 空载		Rated Load 额定负载				Stall 堵转	
	Operating Range	Rated	Speed (rpm)	Current (A)	Torque (Nm)	Speed (rpm)	Current (A)	Output P. (W)	Torque (Nm)	Current (A)
JBG3657-S01 (Gear Ratio 400)	8-26	24	5	0.013	2.0	4	0.089	1.29	10.4	2.5
JBG3657-S02 (Gear Ratio 51)	8-26	24	133	0.42	1.0	124	1.13	18.6	4.52	2.5
JBG3657-S03 (Gear Ratio 51)	8-26	24	102	0.38	2.25	83	2.08	19.6	7.64	3.0
JBG3657-S04 (Gear Ratio 51)	8-26	12	39	0.21	1.24	32	0.76	4.15	7.39	2.5

Customization

Notice: Data in this typical specification sheet are for other certain customer. Voltage, rated torque, speed, current, power, gear box ratio & dimension, shaft extension feature & dimension can be changed to meet customer specific requirement

注意: 上述规格仅针对特定客户, 电压、扭矩、转速、电流、功率、齿轮箱的减速比和尺寸、输出轴的特征和尺寸等都可以按照客户的特殊要求进行调整。

Curve



Dia 36mm JBG3650 BLDC gearbox motor



JBG3650

Weight: 330g (approx.)

Typical Application

Home Application: Electric door, Electric Window, Electric Curtain, Electric Awning 家用电器：电动门，电动窗，电动窗帘，电动遮阳棚

Industry Facility: Transmission Equipment, Gear System, Actuator 工业设备：传动机械，齿轮系统，致动器

Electronic Equipment: Electric Valve, Small Switcher, Lighting Adjustor, Small Percussion Drill 电控设备：电动阀门，小型转换器，灯光调节器，电动扳手

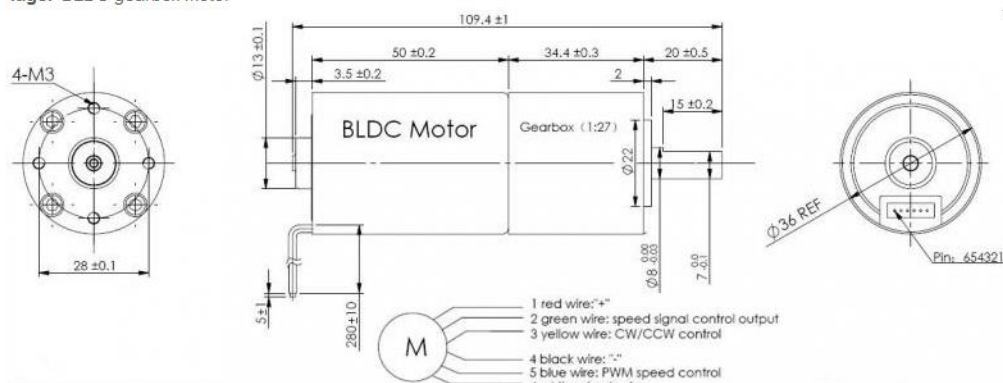
Business Equipment: Electric Gate, Banking Facility, ATM, Vending Machine 商业设备：电动门禁，银行设施，ATM机，售卖机

Personal Care: Massager 个人护理：按摩器

Key Features

Characteristic: CW & CCW, Signal function available, Locked rotor protection, Stepless speed regulation, Low noise, Low EMI

特征：双转向，信号功能，锁定保护，无级调速，低噪音，低电磁干扰

Tags: BLDC gearbox motor


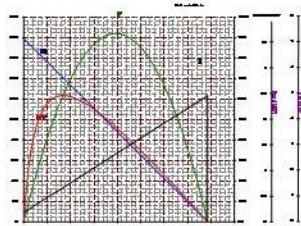
Model 型号	电压 Voltage(V)		No Load 空载		Rated Load 额定负载				Stall 堵转	
	Operating Range	Rated	Speed (rpm)	Current (A)	Torque (Nm)	Speed (rpm)	Current (A)	Output P. (W)	Torque (Nm)	Current (A)
JBG3650-S01 (Gear Ratio 14)	8-26	12	128	0.18	0.42	100	0.66	4.43	1.98	2.5
JBG3650-S02 (Gear Ratio 14)	8-26	12	116	0.14	0.154	104	0.33	1.68	1.52	2.5
JBG3650-S03 (Gear Ratio 27)	8-26	24	283	0.19	0.87	133	0.90	12.1	5.86	2.5

Customization

Notice: Data in this typical specification sheet are for other certain customer. Voltage, rated torque, speed, current, power, gear box ratio & dimension, shaft extension feature & dimension can be changed to meet customer specific requirement.

注意：上述规格仅针对特定客户，电压、扭矩、转速、电流、功率、齿轮箱的减速比和尺寸、输出轴的特征和尺寸等都可以按照客户的特殊要求进行调整。

Curve



Dia 36mm JBG3640 BLDC gearbox motor



JBG3640

Weight: 295g (approx.)

Typical Application

Home Application: Electric door, Electric Window, Electric Curtain, Electric Awning 家用电器: 电动门, 电动窗, 电动窗帘, 电动遮阳棚

Industry Facility: Transmission Equipment, Gear System, Actuator 工业设备: 传动机械, 齿轮系统, 致动器

Electronic Equipment: Electric Valve, Small Switcher, Lighting Adjustor, Small Percussion Drill 电控设备: 电动阀门, 小型转换器, 灯光调节器, 电动扳手

Business Equipment: Electric Gate, Banking Facility, ATM, Vending Machine 商业设备: 电动门禁, 银行设施, ATM机, 售卖机

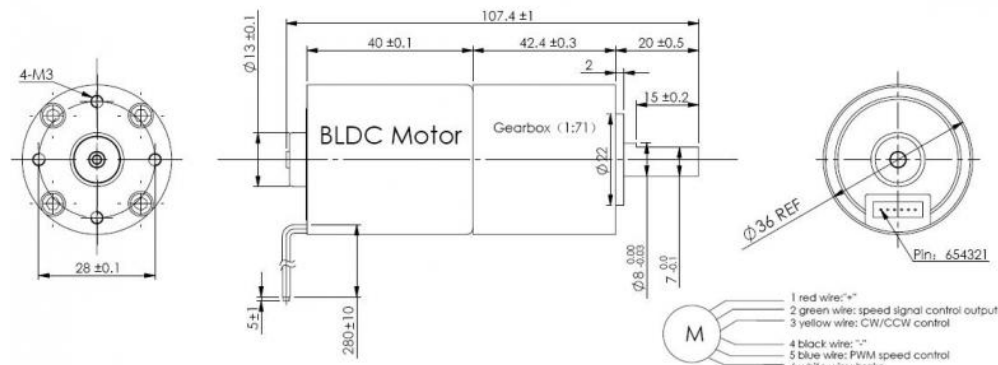
Personal Care: Massager 个人护理: 按摩器

Key Features

Characteristic: CW & CCW, Signal function available, Locked rotor protection, Stepless speed regulation, Low noise, Low EMI

特征: 双转向, 信号功能, 锁定保护, 无级调速, 低噪音, 低电磁干扰

Tags: BLDC gearbox motor



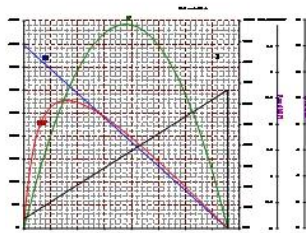
Model 型号	电压 Voltage(V)		No Load 空载		Rated Load 额定负载				Stall 堵转	
	Operating Range	Rated	Speed (rpm)	Current (A)	Torque (Nm)	Speed (rpm)	Current (A)	Output P. (W)	Torque (Nm)	Current (A)
JBG3640-S01 (Gear Ratio 27)	8-26	24	147	0.19	0.597	116	0.70	7.28	2.66	2.5
JBG3640-S02 (Gear Ratio 27)	8-26	24	150	0.24	1.27	120	1.19	13.0	2.83	2.5
JBG3640-S03 (Gear Ratio 71)	8-26	12	33	0.21	1.43	28	0.72	4.19	8.58	2.5

Customization

Notice: Data in this typical specification sheet are for other certain customer. Voltage, rated torque, speed, current, power, gear box ratio & dimension, shaft extension feature & dimension can be changed to meet customer specific requirement.

注意: 上述规格仅针对特定客户, 电压、扭矩、转速、电流、功率、齿轮箱的减速比和尺寸、输出轴的特征和尺寸等都可以按照客户的特殊要求进行调整。

Curve



Dia 36mm BLDC gearbox motor

JBG3630

Weight: 255g (approx.)



Typical Application

Home Application: Electric door, Electric Window, Electric Curtain, Electric Awning 家用电器：电动门，电动窗，电动窗帘，电动遮阳棚

Industry Facility: Transmission Equipment, Gear System, Actuator 工业设备：传动机械，齿轮系统，致动器

Electronic Equipment: Electric Valve, Small Switcher, Lighting Adjustor, Small Percussion Drill 电控设备：电动阀门，小型转换器，灯光调节器，电动扳手

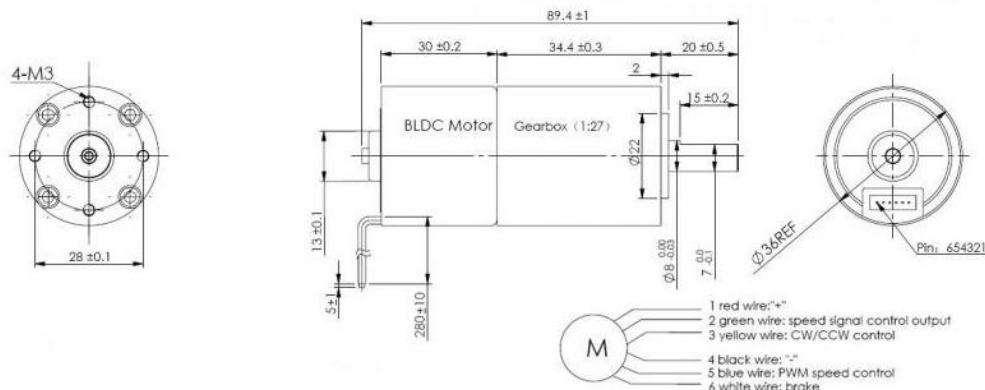
Business Equipment: Electric Gate, Banking Facility, ATM, Vending Machine 商业设备：电动门禁，银行设施，ATM机，售卖机

Personal Care: Massager 个人护理：按摩器

Key Features

Characteristic: CW & CCW, Signal function available, Locked rotor protection, Stepless speed regulation, Low noise, Low EMI

特征：双转向，信号功能，锁定保护，无级调速，低噪音，低电磁干扰

Tags: BLDC gearbox motor


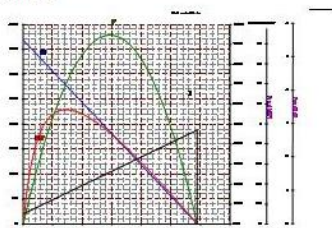
Model 型号	电压 Voltage(V)		No Load 空载		Rated Load 额定负载				Stall 堵转	
	Operating Range	Rated	Speed (rpm)	Current (A)	Torque (Nm)	Speed (rpm)	Current (A)	Output P. (W)	Torque (Nm)	Current (A)
JBG3630-S01 (Gear Ratio 48)	5-26	7.4	91	0.45	0.378	77	1.08	3.05	2.18	2.5
JBG3630-S02 (Gear Ratio 100)	5-26	24	36	0.10	0.147	24	0.38	3.79	4.41	2.5
JBG3630-S03 (Gear Ratio 27)	5-26	12	161	0.25	0.55	124	1.1	7.14	2.47	2.5

Customization

Notice: Data in this typical specification sheet are for other certain customer. Voltage, rated torque, speed, current, power, gear box ratio & dimension, shaft extension feature & dimension can be changed to meet customer specific requirement.

注意：上述规格仅针对特定客户，电压、扭矩、转速、电流、功率、齿轮箱的减速比和尺寸、输出轴的特征和尺寸等都可以按照客户的特殊要求进行调整。

Curve



Dia 36mm BLDC gearbox motor



JBG3626

Weight: 240g (approx.)

Typical Application

Home Application: Electric door, Electric Window, Electric Curtain, Electric Awning 家用电器: 电动门, 电动窗, 电动窗帘, 电动遮阳棚

Industry Facility: Transmission Equipment, Gear System, Actuator 工业设备: 传动机械, 齿轮系统, 致动器

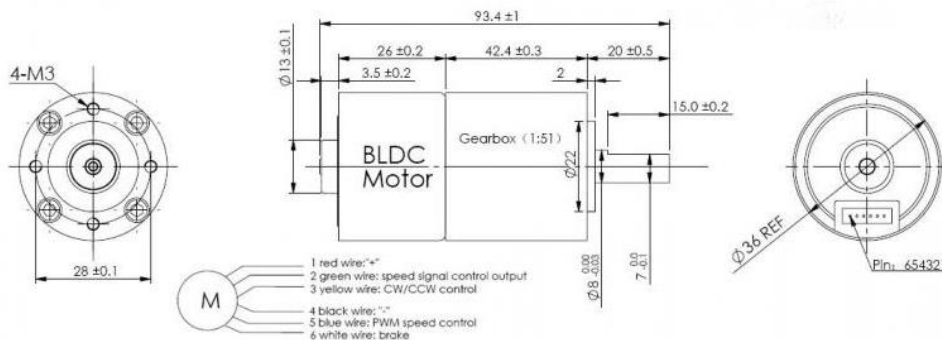
Electronic Equipment: Electric Valve, Small Switcher, Lighting Adjustor, Small Percussion Drill 电控设备: 电动阀门, 小型转换器, 灯光调节器, 电动扳手

Business Equipment: Electric Gate, Banking Facility, ATM, Vending Machine 商业设备: 电动门禁, 银行设施, ATM机, 售卖机

Personal Care: Massager 个人护理: 按摩器

Key Features

 Characteristic: CW & CCW, Signal function available, Locked rotor protection, Stepless speed regulation, Low noise, Low EMI
 特征: 双转向, 信号功能, 锁定保护, 无级调速, 低噪音, 低电磁干扰。

Tags: BLDC gearbox motor


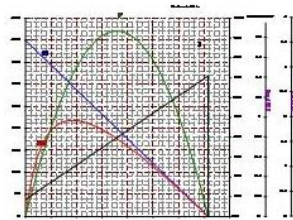
Model 型号	电压 Voltage(V)		No Load 空载		Rated Load 额定负载				Stall 堵转	
	Operating Range	Rated	Speed (rpm)	Current (A)	Torque (Nm)	Speed (rpm)	Current (A)	Output P. (W)	Torque (Nm)	Current (A)
JBG3626-S01 (Gear Ratio 17)	8-26	12	375	0.32	0.267	266	1.26	7.45	0.92	2.5
JBG3626-S02 (Gear Ratio 30)	8-26	12	253	0.43	0.353	189	1.34	7.01	1.40	2.5
JBG3626-S03 (Gear Ratio 96)	8-26	12	42	0.17	0.92	26	0.65	3.54	2.23	2.5
JBG3626-S04 (Gear Ratio 369)	8-26	12	4.7	0.09	3.04	2.8	0.30	0.90	7.56	2.5
JBG3626-S05 (Gear Ratio 51)	8-26	18	104	0.19	0.40	89	0.44	4.67	2.24	2.5

Customization

Notice: Data in this typical specification sheet are for other certain customer. Voltage, rated torque, speed, current, power, gear box ratio & dimension, shaft extension feature & dimension can be changed to meet customer specific requirement.

注意: 上述规格仅针对特定客户, 电压、扭矩、转速、电流、功率、齿轮箱的减速比和尺寸、输出轴的特征和尺寸等都可以按照客户的特殊要求进行调整。

Curve



Dia 28mm BLDC gearbox motor

JBG2838

Weight: 150g (approx.)



Typical Application

Home Application: Electric Window, Electric Curtain, Actuator, Small Appliances, Portable Equipment 家用电器：电动窗，电动窗帘，小家电，便携式器材

Industry Facility: Transmission Equipment, Gear System, Actuator 工业设备：传动机械，齿轮系统，致动器

Electronic Equipment: Electric Valve, Small Switcher, Lighting Adjustor, Small Percussion Drill 电控设备：电动阀门，小型转换器，灯光调节器，电动扳手

Business Equipment: Electric Gate, Banking Facility, ATM, Vending Machine 商业设备：电动门禁，银行设施，ATM机，售卖机

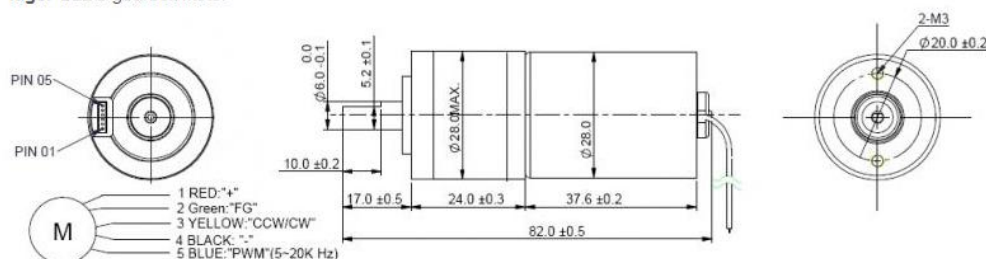
Personal Care: Massager, Stroker, Vibrator 个人护理：按摩器，摩挲器，振动器

Key Features

Characteristic: CW & CCW, Signal function available, Locked rotor protection, Stepless speed regulation, Low noise, Low EMI

特征：双转向，信号功能，锁定保护，无级调速，低噪音，低电磁干扰

Tags: BLDC gearbox motor



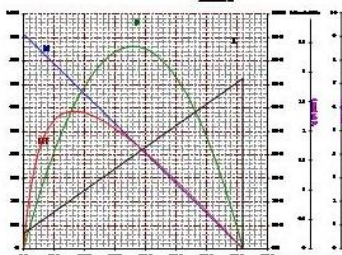
Model 型号	电压 Voltage(V)		No Load 空载		Rated Load 额定负载				Stall 堵转	
	Operating Range	Rated	Speed (rpm)	Current (A)	Torque (Nm)	Speed (rpm)	Current (A)	Output P. (W)	Torque (Nm)	Current (A)
JBG2838-S01 (Gear Ratio 5.2)	8-26	12	176	0.26	0.612	104	1.34	8.34	1.03	2.50
JBG2838-S02 (Gear Ratio 24)	8-26	12	65	0.24	0.750	45	0.61	3.53	3.80	1.6
JBG2838-S03 (Gear Ratio 51)	8-26	12	145	0.23	0.816	104	1.54	7.14	1.21	2.50

Customization

Notice: Data in this typical specification sheet are for other certain customer. Voltage, rated torque, speed, current, power, gear box ratio & dimension, shaft extension feature & dimension can be changed to meet customer specific requirement.

注意：上述规格仅针对特定客户，电压、扭矩、转速、电流、功率、齿轮箱的减速比和尺寸、输出轴的特征和尺寸等都可以按照客户的特殊要求进行调整。

Curve



Dia 24mm JBG2430 BLDC gearbox motor



JBG2430

Weight: 110g (approx.)

Typical Application

Home Application: Electric Window, Electric Curtain, Actuator, Small Appliances, Portable Equipment 家用电器：电动窗，电动窗帘，小家电，便携式器材

Industry Facility: Transmission Equipment, Gear System, Actuator 工业设备：传动机械，齿轮系统，致动器

Electronic Equipment: Electric Valve, Small Switcher, Lighting Adjustor, Small Percussion Drill 电控设备：电动阀门，小型转换器，灯光调节器，电动扳手

Business Equipment: Electric Gate, Banking Facility, ATM, Vending Machine 商业设备：电动门禁，银行设施，ATM机，售卖机

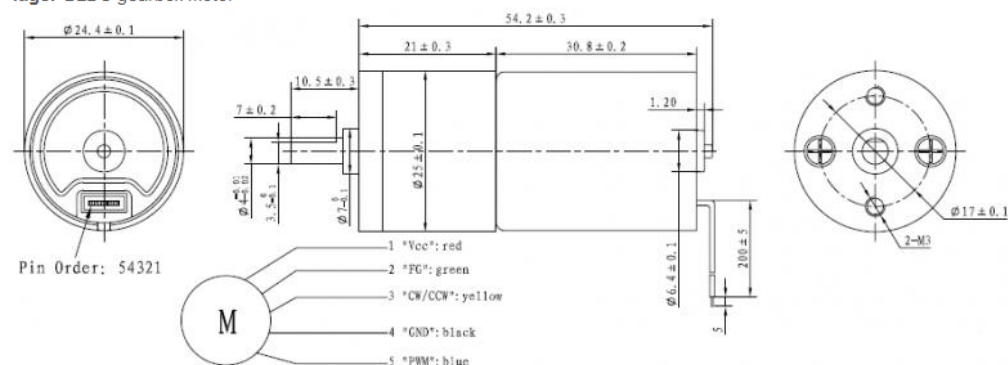
Personal Care: Massager, Stroker, Vibrator 个人护理：按摩器，摩挲器，振动器

Key Features

Characteristic: CW & CCW, Signal function available, Locked rotor protection, Stepless speed regulation, Low noise, Low EMI

特征：双转向，信号功能，锁定保护，无级调速，低噪音，低电磁干扰

Tags: BLDC gearbox motor



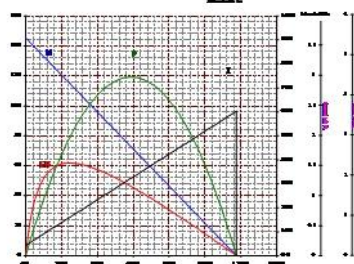
Model 型号	电压 Voltage(V)		No Load 空载		Rated Load 额定负载				Stall 堵转	
	Operating Range	Rated	Speed (rpm)	Current (A)	Torque (Nm)	Speed (rpm)	Current (A)	Output P. (W)	Torque (Nm)	Current (A)
JBG2430-S01 (Gear Ratio 46.9)	8-26	12	145	0.17	0.331	104	0.80	3.62	1.17	1.5
JBG2430-S02 (Gear Ratio 78)	8-26	24	109	0.16	0.235	100	0.32	2.48	2.76	1.5
JBG2430-S02 (Gear Ratio 150)	8-26	12	47	0.13	0.588	35	0.54	2.19	2.44	1.5

Customization

Notice: Data in this typical specification sheet are for other certain customer. Voltage, rated torque, speed, current, power, gear box ratio & dimension, shaft extension feature & dimension can be changed to meet customer specific requirement.

注意：上述规格仅针对特定客户，电压、扭矩、转速、电流、功率、齿轮箱的减速比和尺寸、输出轴的特征和尺寸等都可以按照客户的特殊要求进行调整。

Curve



Dia 24mm BLDC gearbox motor

JBG2418

Weight: 60g (approx.)



Typical Application

Home Application: Electric Window, Electric Curtain, Actuator, Small Appliances, Portable Equipment 家用电器：电动窗，电动窗帘，小家电，便携式器材

Industry Facility: Transmission Equipment, Gear System, Actuator 工业设备：传动机械，齿轮系统，致动器

Electronic Equipment: Electric Valve, Small Switcher, Lighting Adjustor 电控设备：电动阀门，小型转换器，灯光调节器

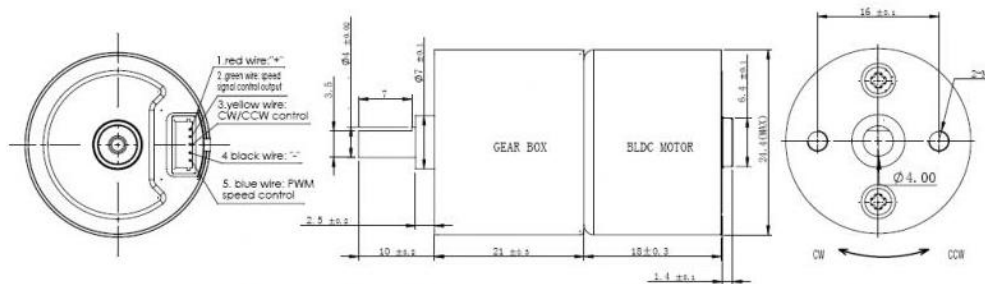
Business Equipment: Electric Gate, Banking Facility, ATM, Vending Machine 商业设备：电动门禁，银行设施，ATM机，售卖机

Personal Care: Massager, Stroker, Vibrator 个人护理：按摩器，摩挲器，振动器

Key Features

Characteristic: CW & CCW, Signal function available, Locked rotor protection, Stepless speed regulation, Low noise, Low EMI

特征：双转向，信号功能，锁定保护，无级调速，低噪音，低电磁干扰

Tags: BLDC gearbox motor


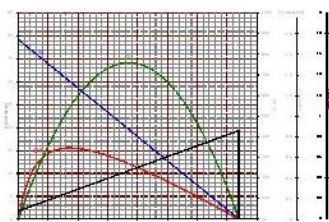
Model 型号	电压 Voltage(V)		No Load 空载		Rated Load 额定负载				Stall 堵转	
	Operating Range	Rated	Speed (rpm)	Current (A)	Torque (Nm)	Speed (rpm)	Current (A)	Output P. (W)	Torque (Nm)	Current (A)
JBG2418-S01 (Gear Ratio 46.9)	8-26	12	132	0.11	0.11	96	0.31	1.12	0.41	0.65
JBG2418-S02 (Gear Ratio 226)	8-26	12	39	0.08	0.42	28	0.30	1.24	0.148	0.65
JBG2418-S03 (Gear Ratio 130)	8-26	24	93	0.10	0.343	73	0.28	2.63	1.44	1.32
JBG2418-S04 (Gear Ratio 64.1)	8-26	24	139	0.06	0.143	107	0.18	1.59	0.602	0.55

Customization

Notice: Data in this typical specification sheet are for other certain customer. Voltage, rated torque, speed, current, power, gear box ratio & dimension, shaft extension feature & dimension can be changed to meet customer specific requirement.

注意：上述规格仅针对特定客户，电压、扭矩、转速、电流、功率、齿轮箱的减速比和尺寸、输出轴的特征和尺寸等都可以按照客户的特殊要求进行调整。

Curve



Dia 16mm BLDC gearbox motor

JBG1625

Weight: 40g (approx.)



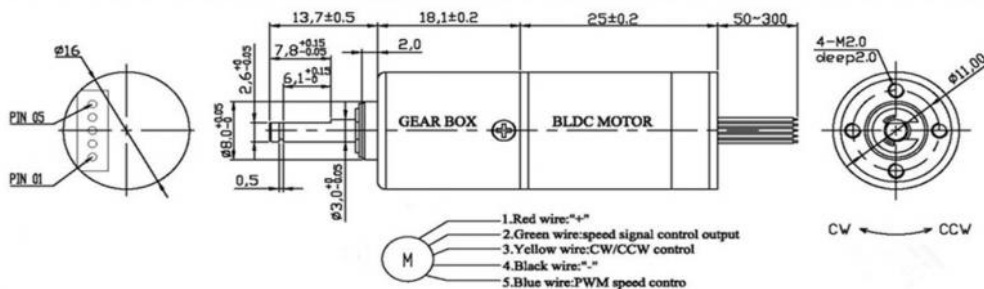
Typical Application

Home Application: White Goods, Small Appliance, Kitchen Appliance, Smart Home, Micro Actuate
 家用电器：白色家电，小家电，厨房电器，智能家居，微型致动器
 Automobile Parts: Micro Pump, Switcher 汽车部件：微型泵，切换器
 Medical Apparatus: Medical Pump, Liquid Pump, Gas Pump 医疗器械：医疗泵，液泵，气泵
 Industry Equipment: Micro Pump, Micro Valve, Instrument, Meter 电动工具：微型泵，微型阀门，仪器仪表
 Business Equipment: Printer, Copier, Projector, Scanner, Cash Register 商业设备：打印机，复印机，投影机，扫描仪，点钞机
 Personal Care: Skin Care, Beauty Apparatus 个人护理：皮肤护理，美容器材。

Key Features

Characteristic: CW & CCW, Signal function available, Locked rotor protection, Stepless speed regulation, Low noise, Low EMI
 特征：双转向，信号功能，锁定保护，无级调速，低噪音，低电磁干扰

Tags: BLDC gearbox motor



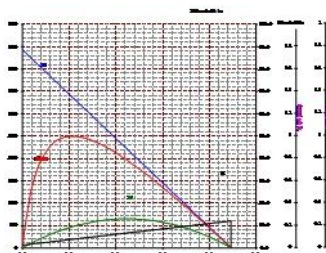
Model 型号	电压 Voltage(V)		No Load 空载		Rated Load 额定负载				Stall 堵转	
	Operating Range	Rated	Speed (rpm)	Current (A)	Torque (Nm)	Speed (rpm)	Current (A)	Output P. (W)	Torque (Nm)	Current (A)
JBG1625-S01 (Gear Ratio 96)	5-13	5	45	0.03	0.043	35	0.09	0.16	0.214	0.9
JBG1625-S02 (Gear Ratio 64)	5-13	12	115	0.03	0.037	100	0.10	0.46	0.272	0.8
JBG1625-S03 (Gear Ratio 256)	5-13	6	40	0.07	0.186	31	0.25	0.85	0.9	0.9

Customization

Notice: Data in this typical specification sheet are for other certain customer. Voltage, rated torque, speed, current, power, gear box ratio & dimension, shaft extension feature & dimension can be changed to meet customer specific requirement.

注意：上述规格仅针对特定客户，电压、扭矩、转速、电流、功率、齿轮箱的减速比和尺寸、输出轴的特征和尺寸等都可以按照客户的特殊要求进行调整。

Curve



Dia 45mm Length 46mm BLDC motor

J45BL46

Weight: 300g (approx.)



Typical Application

Home Application: Vacuum cleaner, Stirrer, High speed fan 家用电器：吸尘器，搅拌器，高速风扇

Personal Care: Hair Dryer, 个人护理：电吹风

Medical Apparatus: Medical Stirrer, centrifugal Machine 医疗器械：医用搅拌器，离心机，制氧机

Industry Equipment: clearing machine, blower fan 工业设备：清洁机，鼓风机

Business Equipment: Cordless drill, electric tool 商业设备：充电钻，电动工具

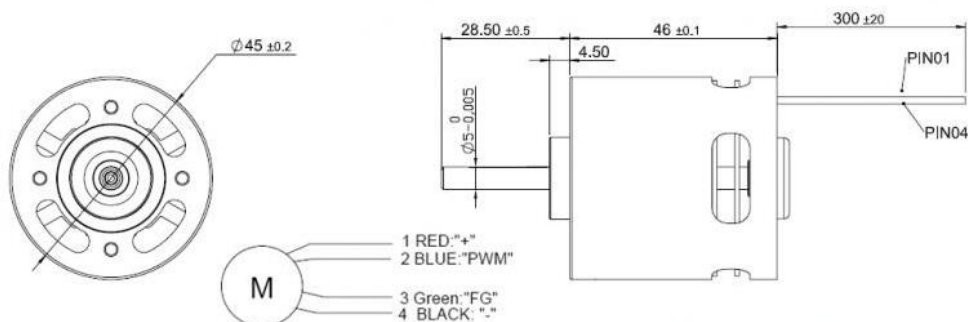
Key Features

Characteristic: CW & CCW, Signal function available, Locked rotor protection, Stepless

speed regulation, Low noise, Low EMI, Long life 10000-50000hrs

特征：双转向，信号功能，无级调速，低噪音，低电磁干扰，超长寿命10000-50000小时

Tags: BLDC motor



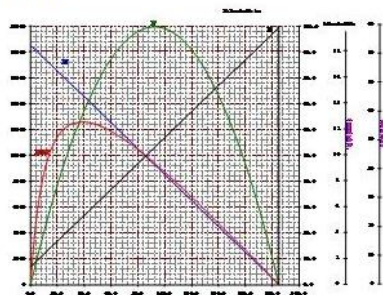
Model 型号	电压 Voltage(V)		No Load 空载		Rated Load 额定负载				Stall 堵转	
	Operating Range	Rated	Speed (rpm)	Current (A)	Torque (mNm)	Speed (rpm)	Current (A)	Output P. (W)	Torque (mNm)	Current (A)
J45BL46M-S01	8-26	18	18536	1.36	32	15321	4.58	51.5	184.9	12
J45BL46M-S02	8-26	18	27377	1.98	40	23141	7.67	96.9	258.7	20
J45BL46M-S03	8-26	18	35494	2.61	65	29515	14.3	201	384.7	45

Customization

Notice: Data in this typical specification sheet are for other certain customer. Voltage, rated torque, speed, current, power and shaft extension feature & dimension can be changed to meet customer specific requirement.

注意：上述规格仅针对特定客户，电压、扭矩、转速、电流、功率、输出轴的特征和尺寸等都可以按照客户的特殊要求进行调整。

Curve



Remarks

The diameter is the same with 8 series brushed dc motor.

Dia 43mm Length 75mm BLDC motor



J42BL75

Weight: 330g (approx.)

Typical Application

Home Application: Electric Window, Electric Door, Fanner, Shredder, Meat Grinder 家用电器: 电动窗, 电动门, 无风叶电风扇, 有风叶风扇, 粉碎机, 绞肉机

Medical Apparatus: Medical Bed, Electric Wheel Chair, Surgery Tools, Operating Table, Centrifugal Machine 医疗器械: 医疗床, 电动轮椅, 手术器械, 手术台, 离心机

Power Tools: Screwdriver, Drill, Air Compressor 电动工具: 电动螺丝批, 电钻, 气体压缩机

Business Equipment: Printer, Copier, Projector, ATM, Vending Machine, Shredder 商业设备: 打印机, 复印机, 投影机, ATM机, 售卖机, 碎纸机

Personal Care: Hair Dryer, Massager, Vibrator 个人护理: 风筒, 按摩器, 震动器

Personal Care: Hair Dryer, Massager, Vibrator 个人护理: 风筒, 按摩器, 震动器

Personal Care: Hair Dryer, Massager, Vibrator 个人护理: 风筒, 按摩器, 震动器

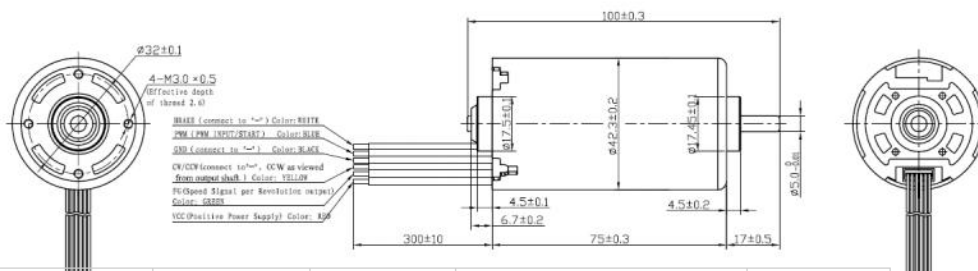
Personal Care: Hair Dryer, Massager, Vibrator 个人护理: 风筒, 按摩器, 震动器

Key Features

Characteristic: CW & CCW, Signal function available, Locked rotor protection, Stepless speed regulation, Low noise, Low EMI, Long life 10000-50000hrs

特征: 双转向, 信号功能, 锁定保护, 无级调速, 低噪音, 低电磁干扰, 超长寿命10000-50000小时

Tags: BLDC motor



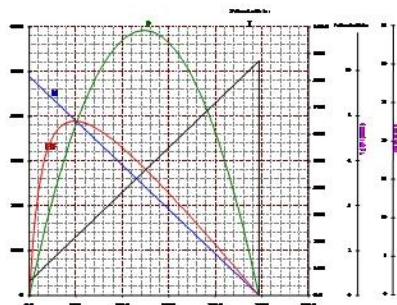
Model 型号	电压 Voltage(V)		No Load 空载		Rated Load 额定负载				Stall 堵转	
	Operating Range	Rated	Speed (rpm)	Current (A)	Torque (mNm)	Speed (rpm)	Current (A)	Output P. (W)	Torque (mNm)	Current (A)
J42BL75M-S01	8-26	12	2511	0.43	107.9	1310	2.38	14.8	222	5.0
J42BL75M-S02	8-26	12	2813	0.34	85	2292	2.29	20.4	458	5.0
J42BL75M-S03	8-26	18	3790	0.32	84.02	2930	2.00	25.8	368	5.0
J42BL75M-S04	8-26	24	5050	0.42	108.6	3900	2.62	44.3	380	5.0

Customization

Notice: Data in this typical specification sheet are for other certain customer. Voltage, rated torque, speed, current, power and shaft extension feature & dimension can be changed to meet customer specific requirement.

注意: 上述规格仅针对特定客户, 电压、扭矩、转速、电流、功率、输出轴的特征和尺寸等都可以按照客户的特殊要求进行调整。

Curve



Remarks

The same size with brushed motor JRS-795.